



**Engineering progress  
Enhancing lives**

## **Forge a refined foundation**

RAUVISIO noir™ monotonic matte is an irresistibly lush surface that leaves nothing to chance by obscuring fingerprints and scratches. Linger with the visual and tactile sensation of entirely seamless matte. Visit [na.rehau.com/noir](https://na.rehau.com/noir)



Forged in the design capital of the world, Italy, **RAUVISIO noir's** color selection has been meticulously curated with colors that reflect ageless traveled elegance.

Deep coal, crisp white and muted sea and emerald tones transport your imagination and senses to worlds of the past.

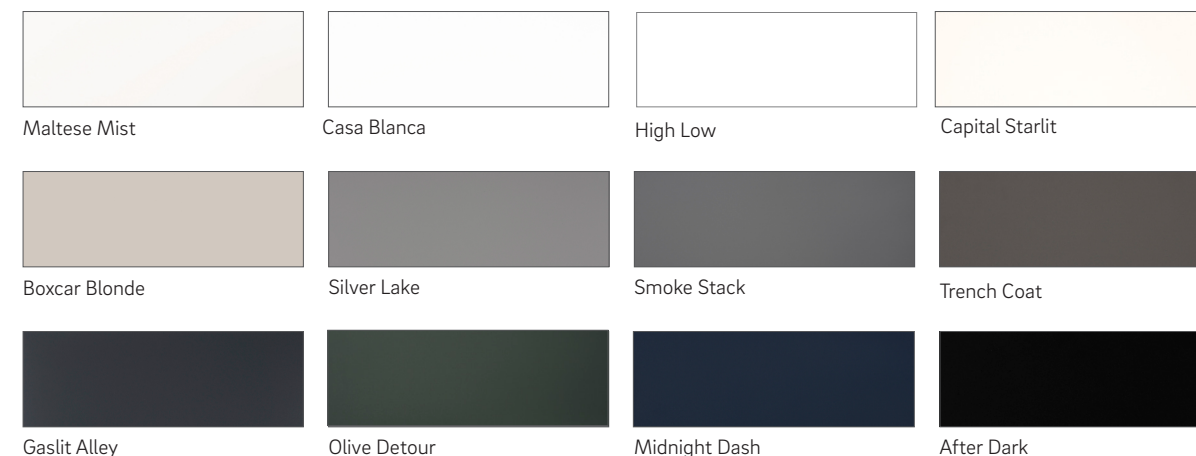
Inspired by the colors of the cinematic world, choose the line designers have identified to be the soul and elegance of modern spaces - embrace **RAUVISIO noir**.



Seamless,  
touchable  
matte  
without fingerprints

This irresistibly lush surface leaves nothing to chance by obscuring fingerprints and scratches. Linger with the visual and tactile sensation of seamless matte from every angle.

### Color Selection



## What is monotonic?

A monotonic matte surface has the ability to retain all of its elemental properties while delivering unwavering resilience, reliability and richly uninhibited elegance in a variety of different scenarios giving you the quality you deserve with the versatility you desire.

The deeply light-absorbent surface withstands scratches and fingerprints while providing the deepest, touchable matte.



### Board Specifications

RAUVISIO noir is laminated to a high-quality engineered MDF core that is CARB2, TSCA Title VI certified and NAF (non-added formaldehyde) exempt.

### Edgeband Specifications

All components are edgebanded with REHAU LaserEdge, which provides an extremely heat and moisture resistant seamless joint and creates a matte solid surface look.

### Cleaning and Care

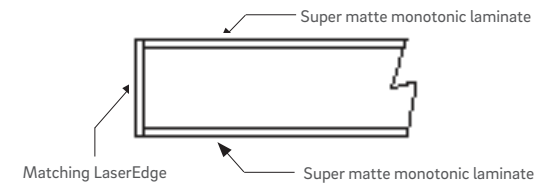
Clean with a damp microfiber cloth and with a mild soap if needed. RAUVISIO noir is resistant to most chemicals and solvent-based cleaners, but harsh chemicals should be avoided. Do not use brushes or scouring pads. REHAU is not responsible for any damage done by abrasive cleaning products or procedures.

### Protective Coat

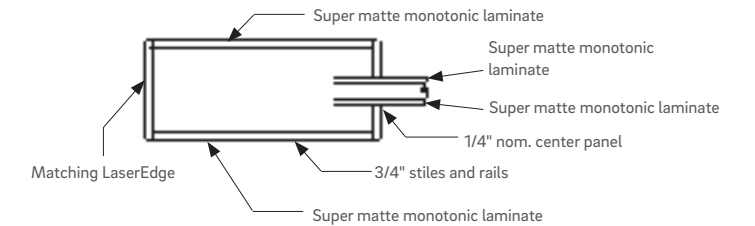
A protective peel coat is applied to the top and bottom surfaces. To remove peel coat, use rubber fingertips or our peel coat removal tool.

Our components feature double-sided matte with matching REHAU LaserEdge elegant matte edgeband. The monotonic matte HPL is laminated onto a super-refined MDF core to ensure the highest quality finish.

### Slab profile



### Shaker profile



**Top:** Slab door and drawer  
**Bottom:** Shaker door

### Profile Specifications

Appearance	Super matte
Door style	Slab and shaker
Design style	Modern, contemporary
Construction	PVA laminated face and back, REHAU LaserEdge
Shaker stiles and rails	3 in (76.2 mm), custom widths also possible
Face material	Super matte monotonic laminate, multiple colors
Back material	Super matte monotonic laminate, matching colors
Edgeband	REHAU LaserEdge, matching color
Core	Super-refined MDF
Board thickness	3/4 in (19 mm)

### Size Parameters

Minimum	3 x 5 in (76.2 x 127 mm)
Maximum	50 x 119 in (1270 x 3022.6 mm)
Minimum shaker size	6 x 12 in (152.4 x 304.8 mm) using 2.75 in. rails

### Edgebanding Profile

Top edge	1.2 mm radius
Bottom edge	1.2 mm radius
Edgeband finish	Elegant matte, color matched

### Accessory Products

1/4 in. thick components	Cut-to-size with raw edges
Integrated handle	1 17/64 and 5/64 in (32 and 2 mm)
Floating shelves	22 to 96 in (558.8 to 2438.4 mm) wide

**Customer Service Contacts**

Hours Monday to Friday, 8 am to 6:30 pm EST

Email [orders.us@rehau.com](mailto:orders.us@rehau.com)

[www.na.rehau.com/cabinetdoors](http://www.na.rehau.com/cabinetdoors)

**United States**

Phone (888) 734-2810 Fax (616) 285-7622

**Canada**

Phone (888) 905-0345 Fax (514) 905-0490



For updates to publication, visit [na.rehau.com/resourcecenter](http://na.rehau.com/resourcecenter)

The information contained herein is believed to be reliable, but no representations, guarantees or warranties of any kind are made as to its accuracy, suitability for particular applications or the results to be obtained therefrom. Before using, the user will determine suitability of the information for user's intended use and shall assume all risk and liability in connection therewith.

© 2020 REHAU Printed in Canada 100.en 06.2020