



_01

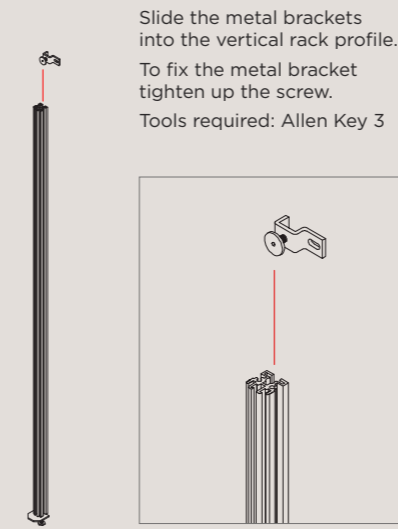
WALK-IN CLOSET

_01.1 TECHNICAL INFORMATION

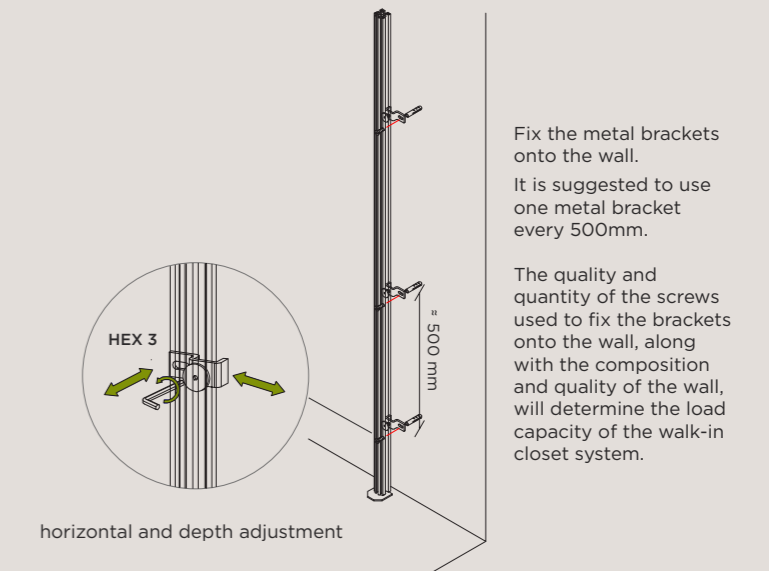
- _01.1 Technical information**
- _01.2 Walk-in closet with back panel
- _01.3 Walk-in closet without back panel

_INSTALLATION GUIDE

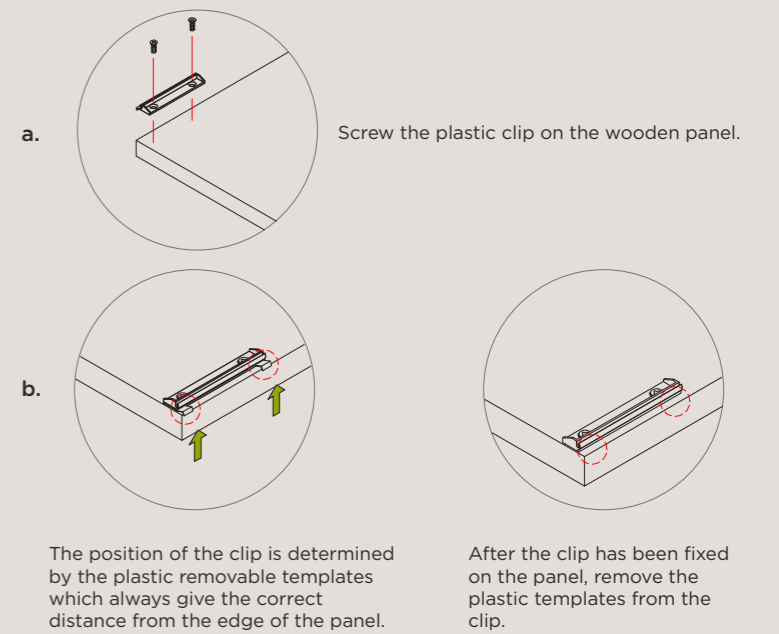
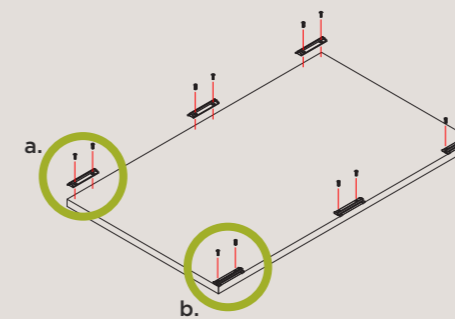
1 _insert the metal brackets



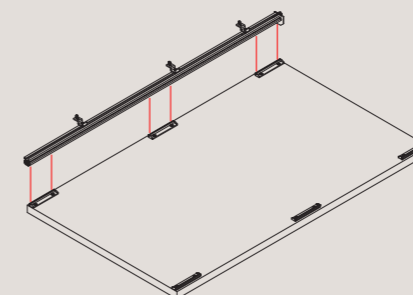
2 _fix the first vertical rack profile to the wall



3 _prepare the wooden panel



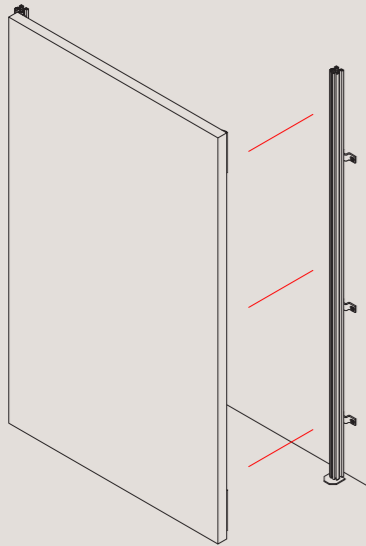
4 _fix the second vertical rack profile on the wooden panel



Once the plastic templates have been removed, you can clip the rack profile in which you have already inserted the metal brackets, onto the plastic clips.

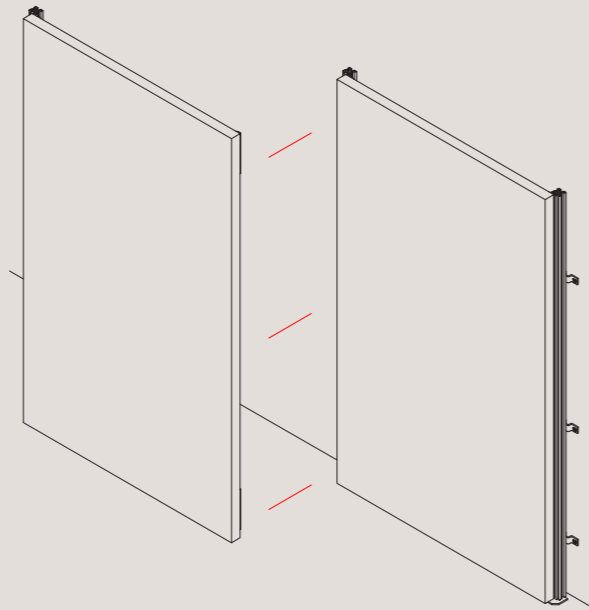
5 _fix the panel with the second vertical rack to the first vertical rack previously fixed on wall

Clip the first wooden panel on the vertical rack profile fixed on the wall.
The position of the second vertical rack profile is given by the wooden panel.



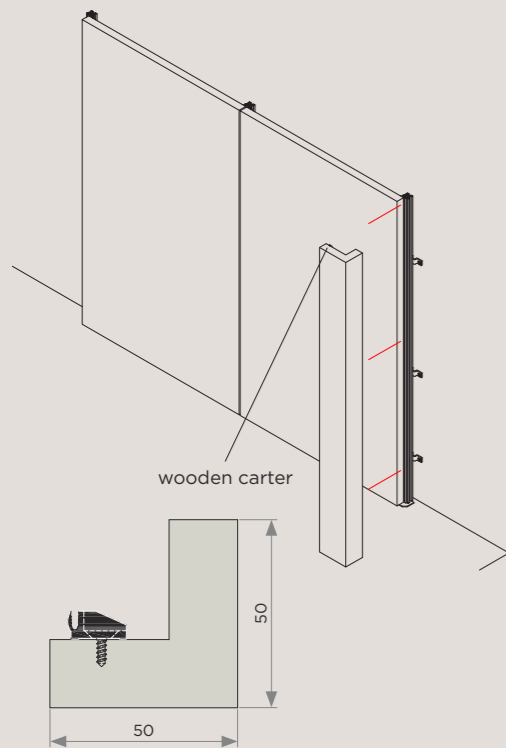
6 _repeat to fix other panels

Clip the second wooden panel on the vertical rack profile fixed on the wall. The position of the next vertical rack profile is given by the wooden panel.
This operation can be repeated for the number of panels needed.



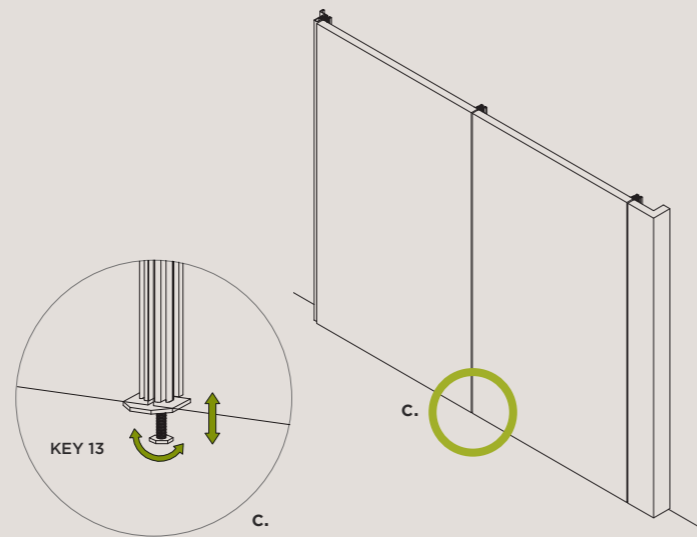
7 _fix the carter

Fix the carter to cover the last vertical rack profile.
It is possible to use both aluminium or wooden carters.

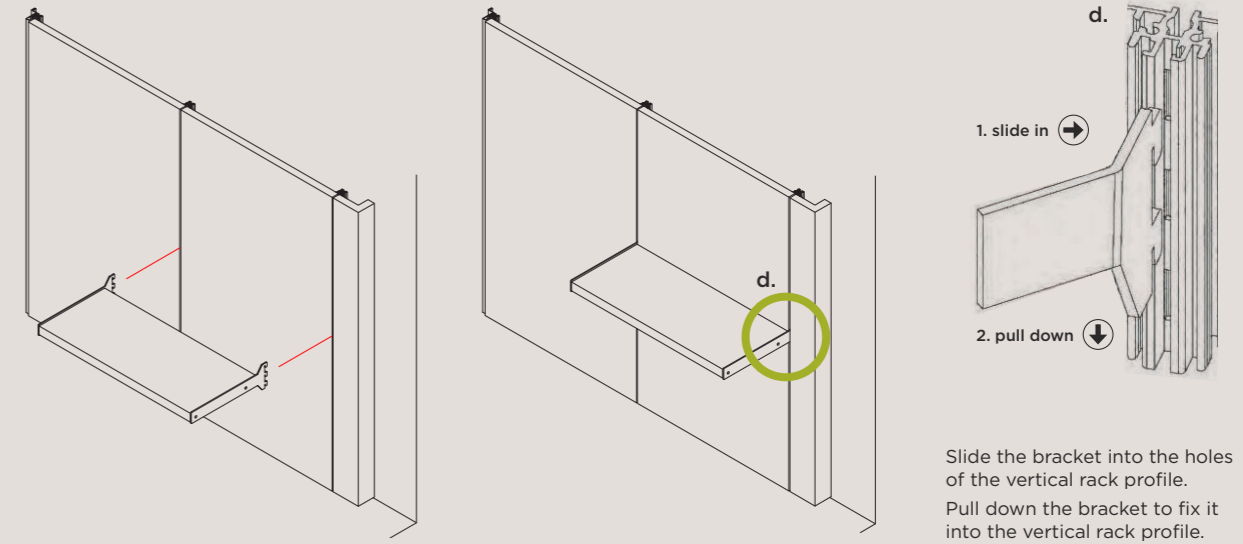


8 _adjust the system

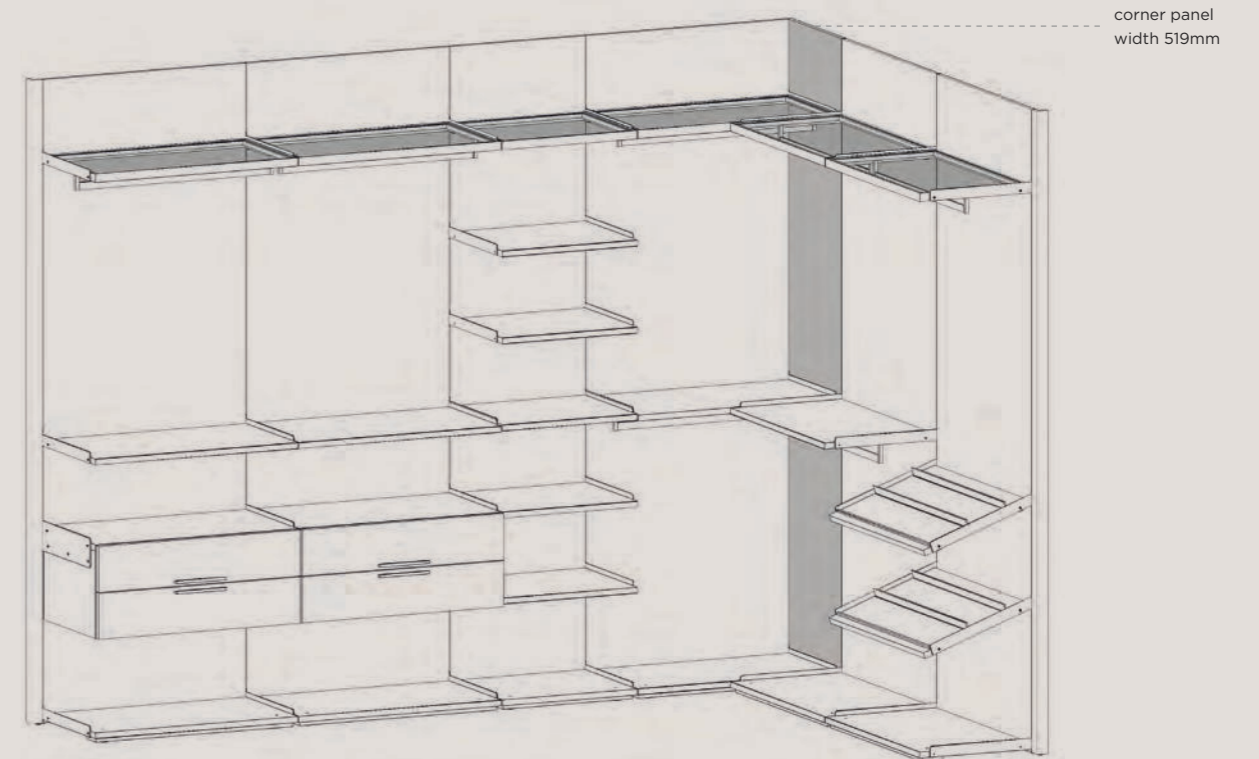
Adjust the height of the panels by aligning the top and bottom edges thanks to the pre-mounted leveler assembled at the bottom of the vertical rack profile.
Tools required: Wrench Key 13



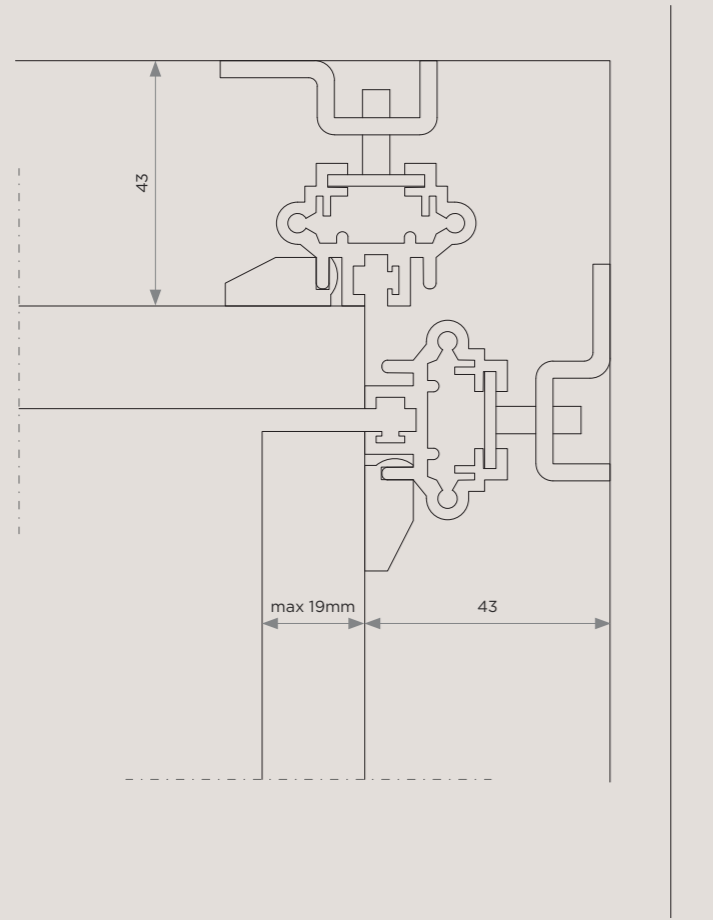
9 _how to fix the shelves and cabinet brackets onto the vertical profile



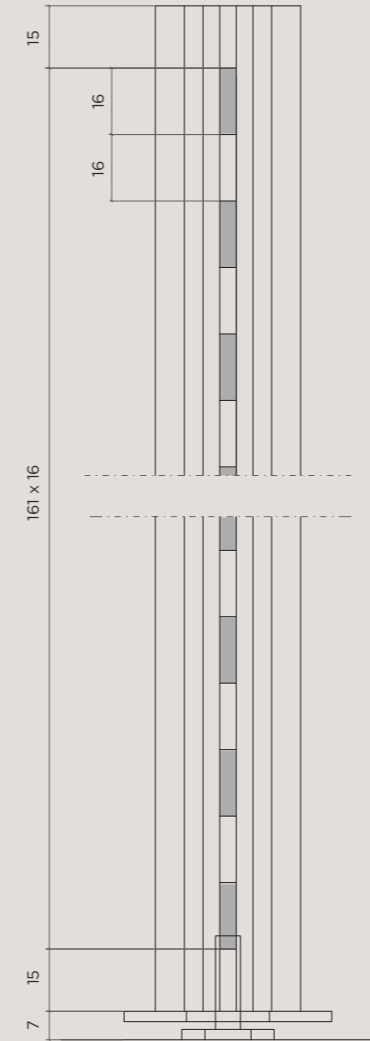
10 _how to make a corner application



_corner



_pitch on vertical rack profile



_wooden shelf + shelf bracket

