



KIARO



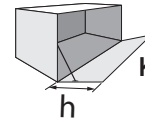
PAT. PENDING



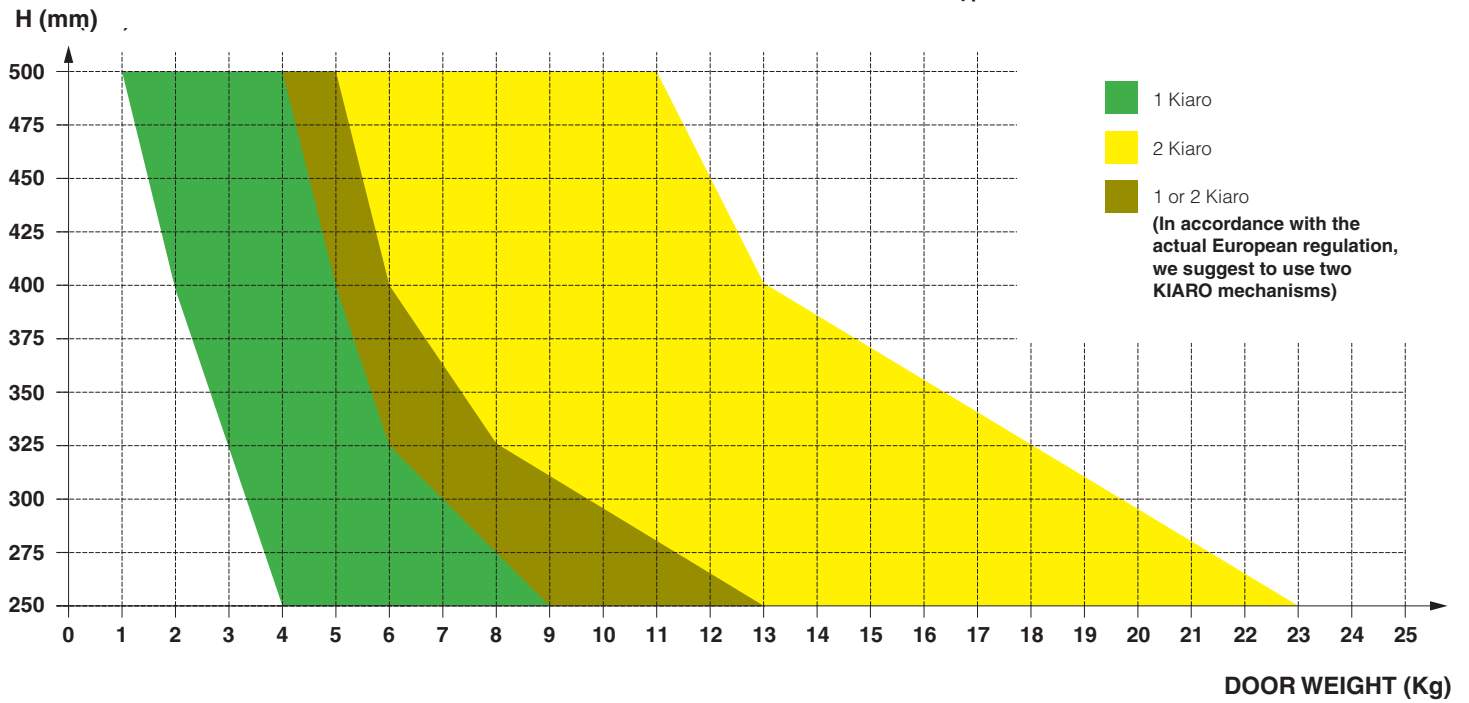
8



MECHANISM INSTALLATION



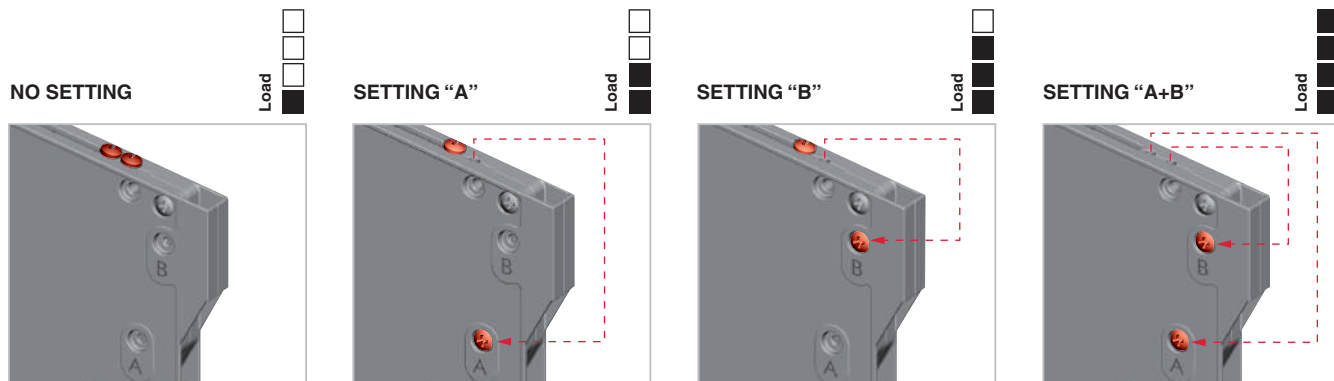
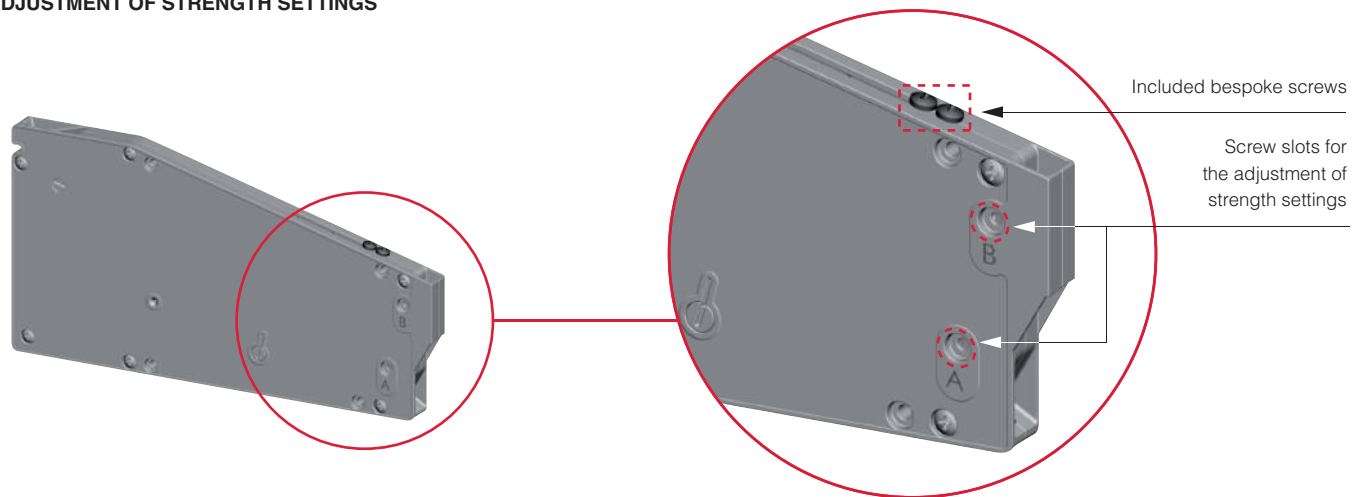
Kg = Door weight including the possible handle.



In case the door weight/dimensions are bigger or smaller than those reported on the chart, our technical department is at your disposal to test further cases out of this chart.

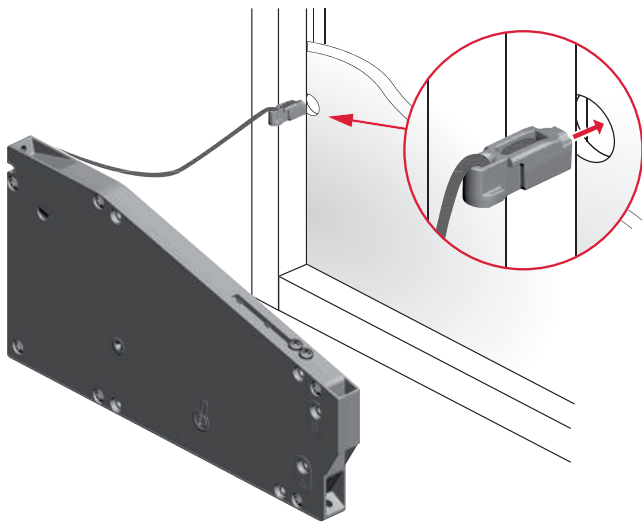
ADJUSTMENT OF STRENGTH SETTINGS

8

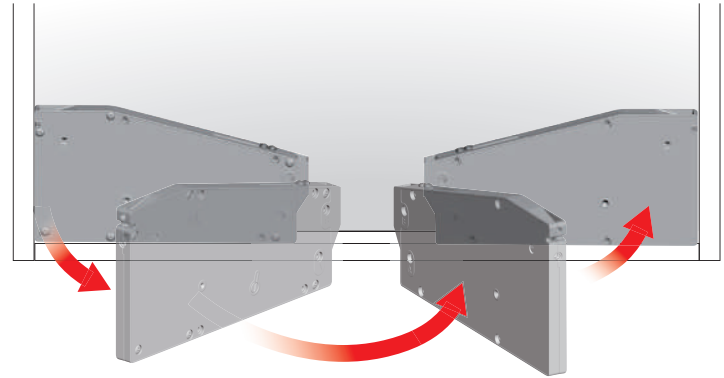




MECHANISM INSTALLATION

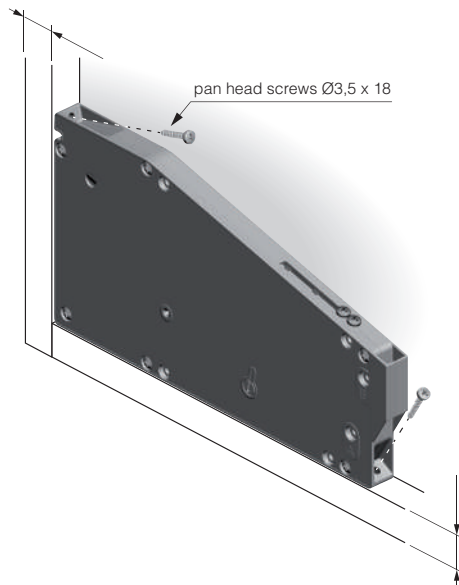


UNHANDED MECHANISM

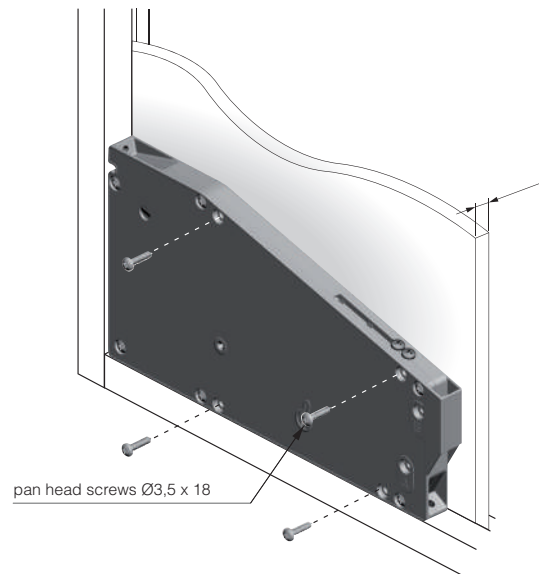


MECHANISM FIXING

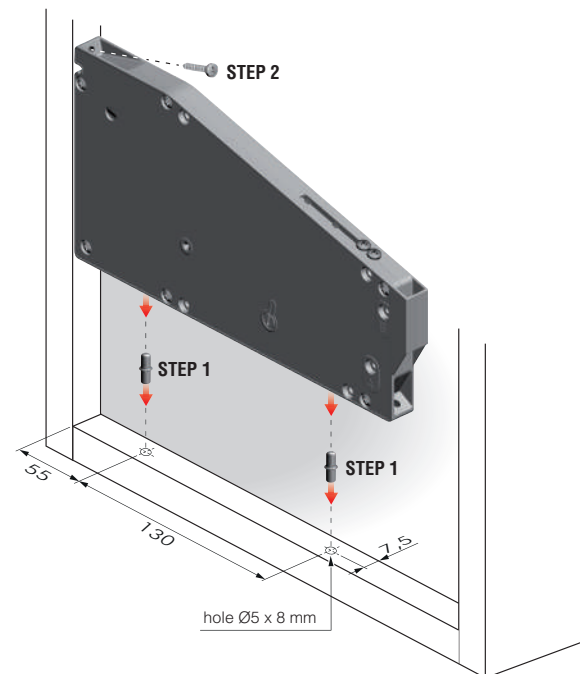
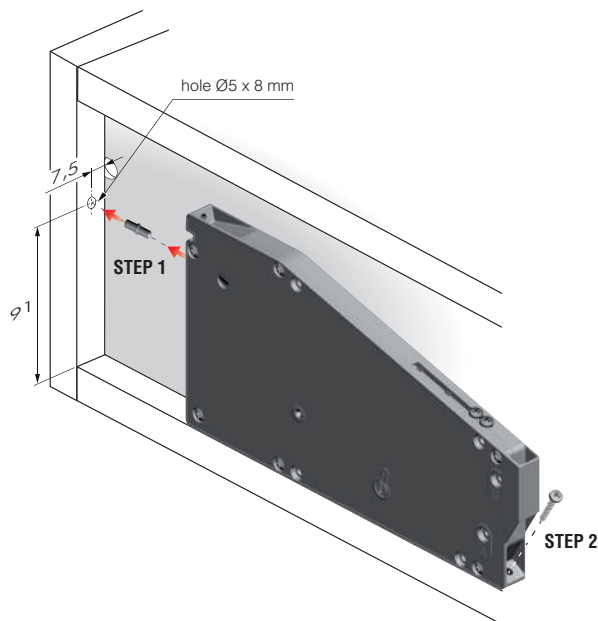
On the bottom and on the side panel with screws



On the back panel with screws



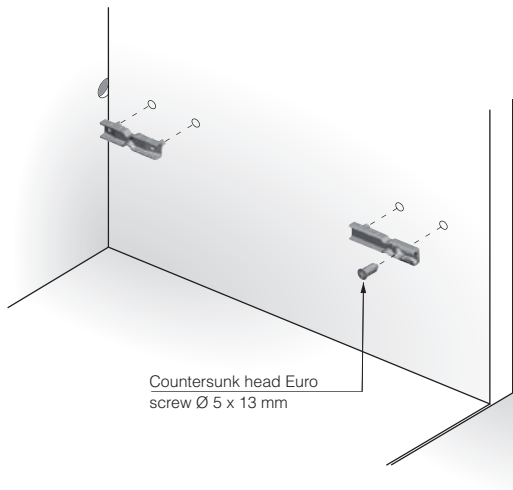
On the bottom and on the side panel with pin and screws





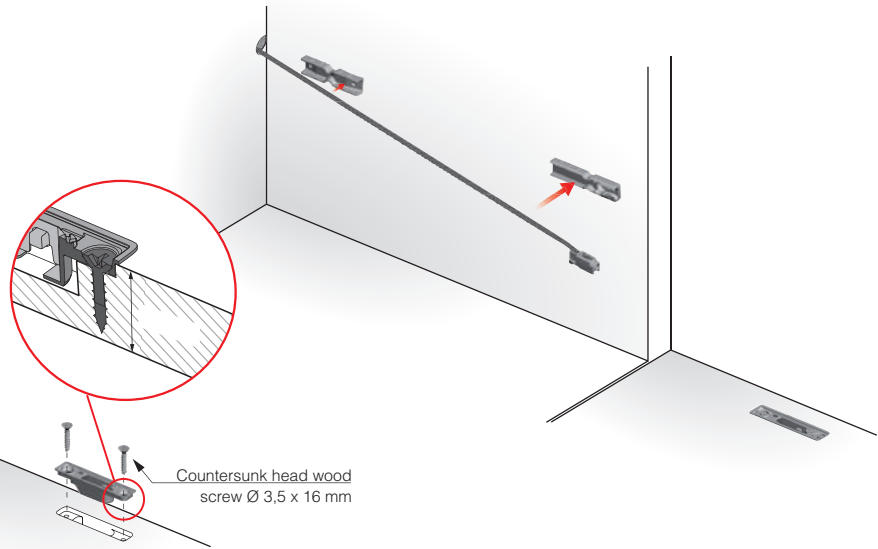
OPENING SYSTEMS FOR LIFT UP AND DROP DOWN DOORS

BRACKETS INSTALLATION



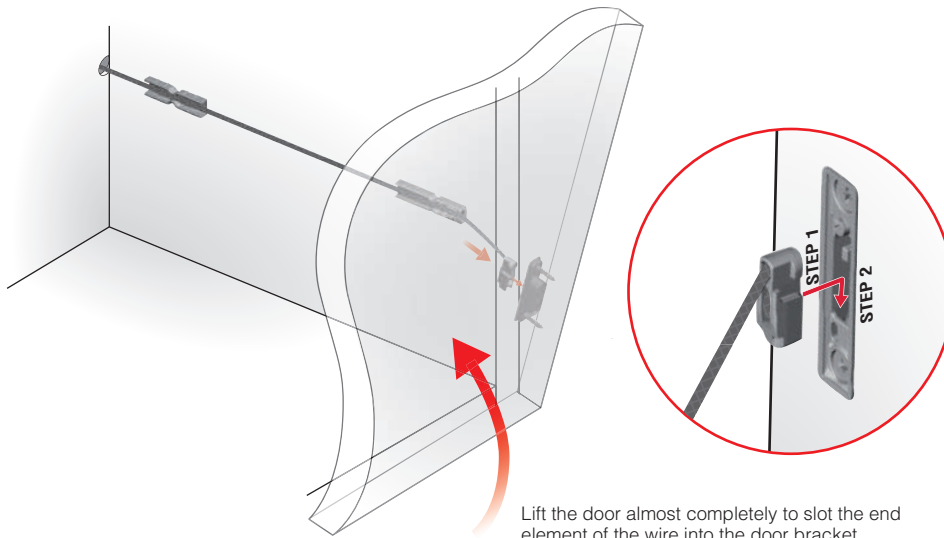
Countersunk head Euro screw $\varnothing 5 \times 13$ mm

WIRE INSTALLATION



Countersunk head wood screw $\varnothing 3,5 \times 16$ mm

WIRE INSERTION ONTO THE DOOR BRACKET



Lift the door almost completely to slot the end element of the wire into the door bracket.

STEP 1

STEP 2

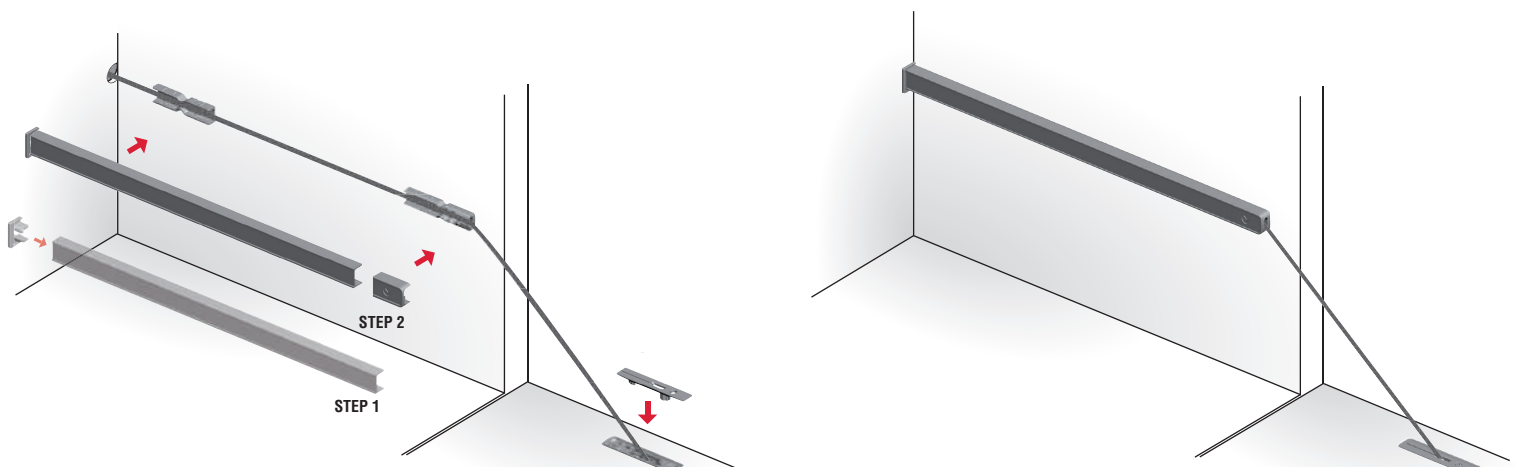


click



8

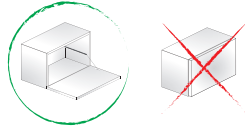
COVER CAP AND ALUMINIUM LATERAL PROFILE INSERTION



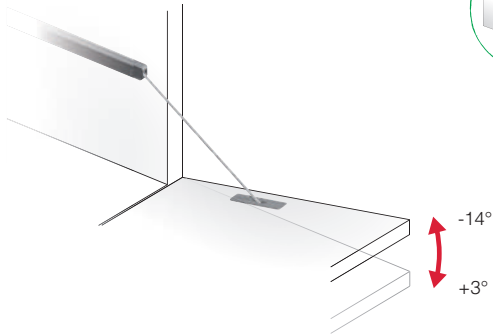
Place the cover cap on the door bracket before lifting the door.



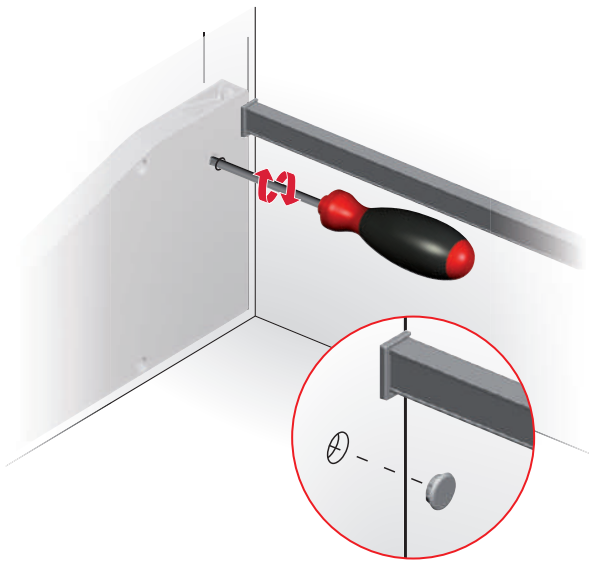
DOOR OPENING ANGLE ADJUSTMENT



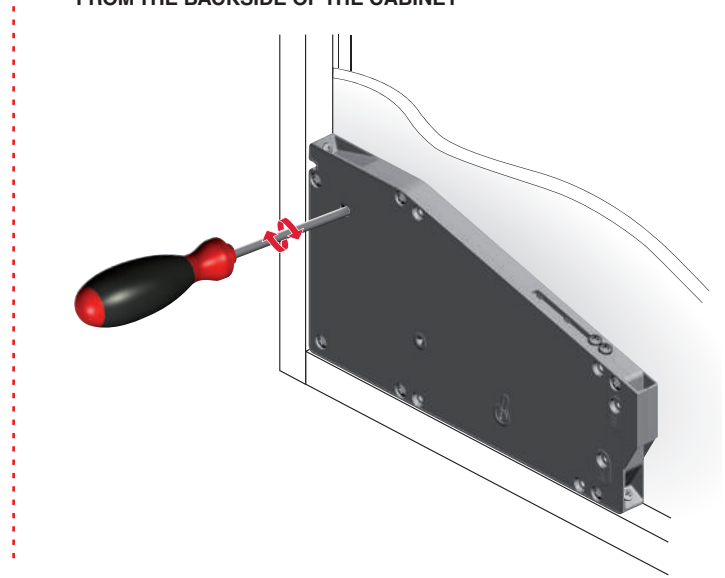
VERY IMPORTANT:
The opening angle adjustment can be carried out only with open door.



FROM THE INSIDE OF THE CABINET



FROM THE BACKSIDE OF THE CABINET

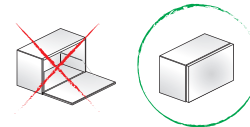


ADJUSTMENT OF STRENGTH SETTINGS

Possibility to adjust the settings of the mechanism also upon completed assembly.
For details refer to the related section.

VERY IMPORTANT:
Before proceeding, make sure:

1) The door is completely closed.

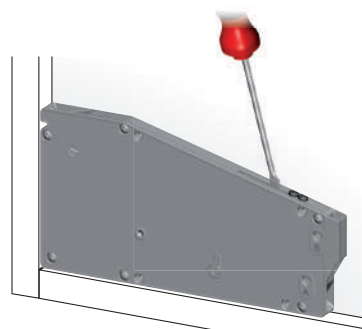


2) The mechanism is completely in position.

OK



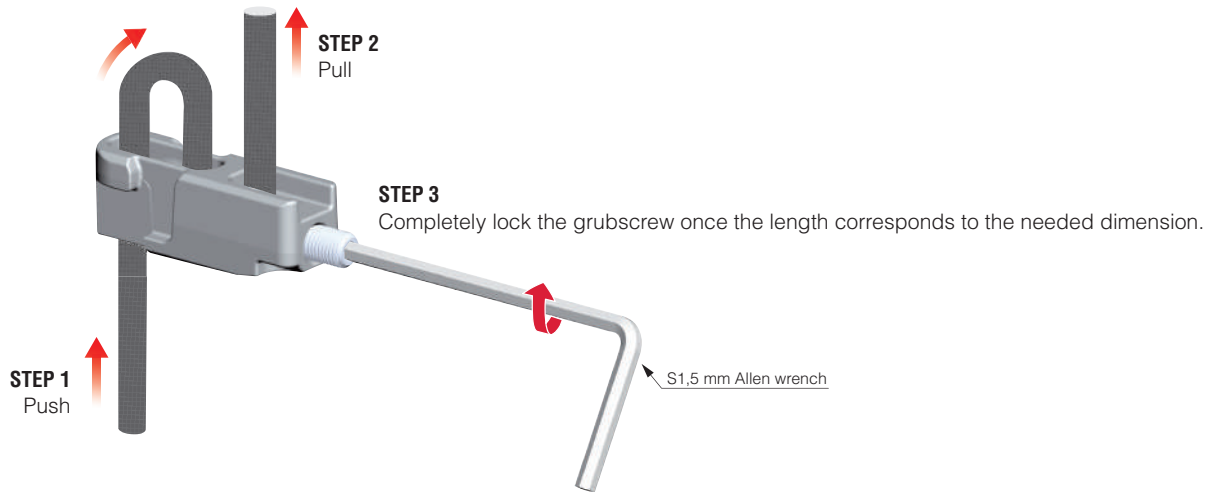
NO



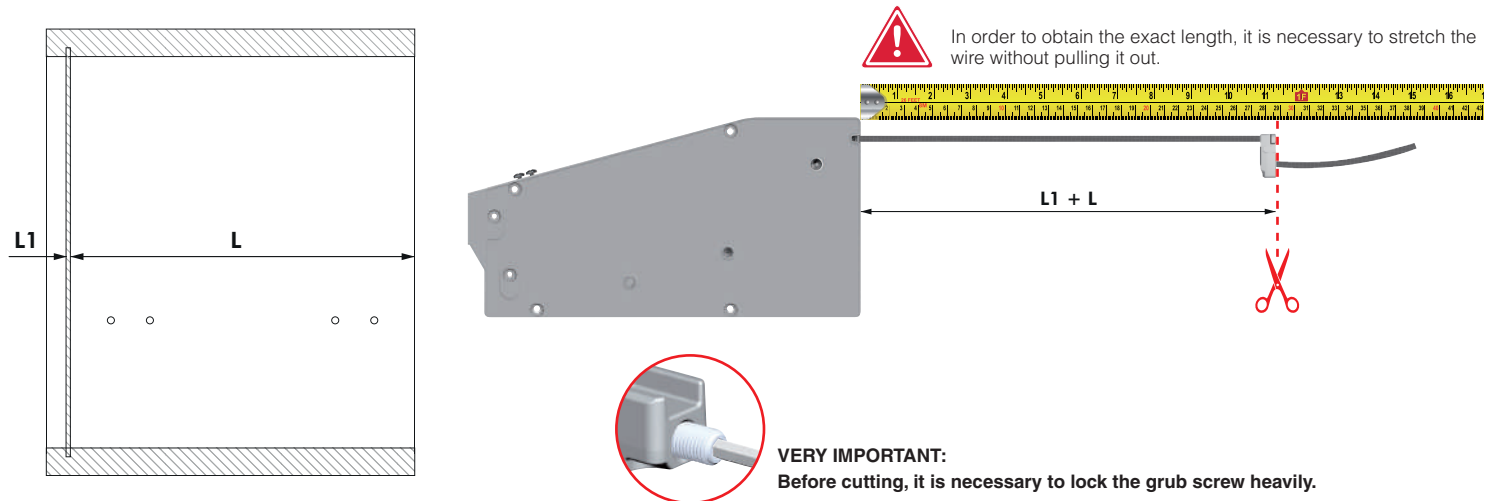
In this case put the small flap in position with a screwdriver.

INSTRUCTIONS FOR WIRE CUTTING

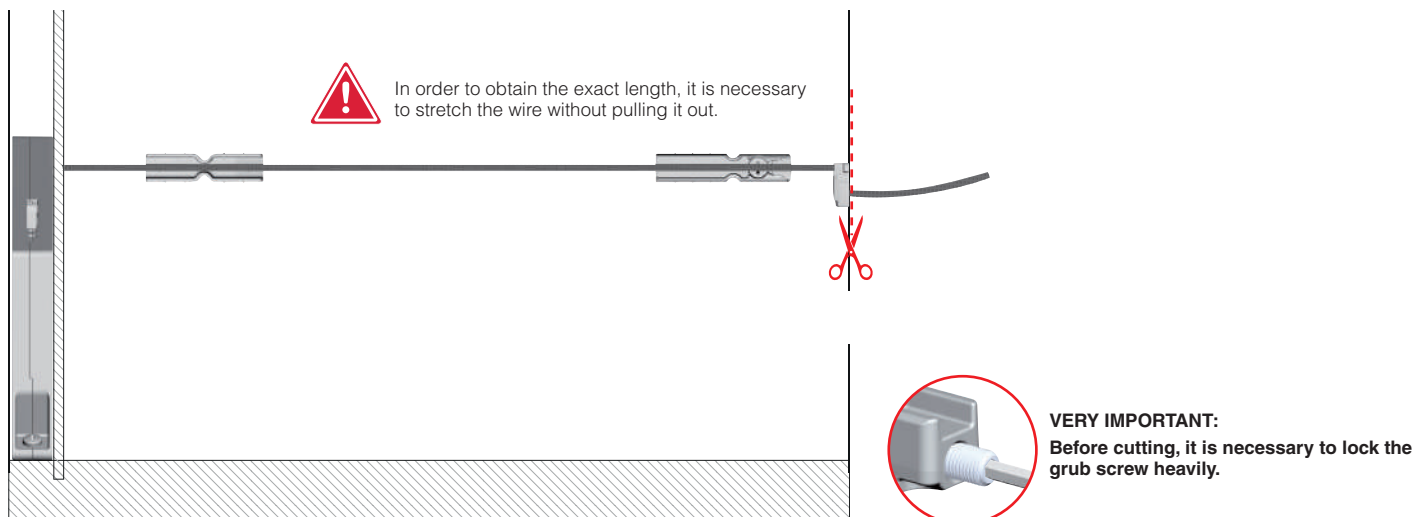
INSERTION OF THE WIRE INTO THE END PART AND LOCKING WITH M3 GRUBSCREW

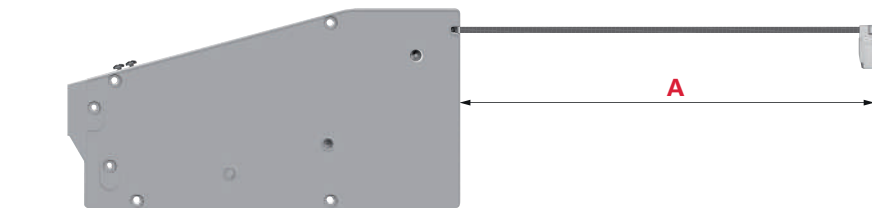
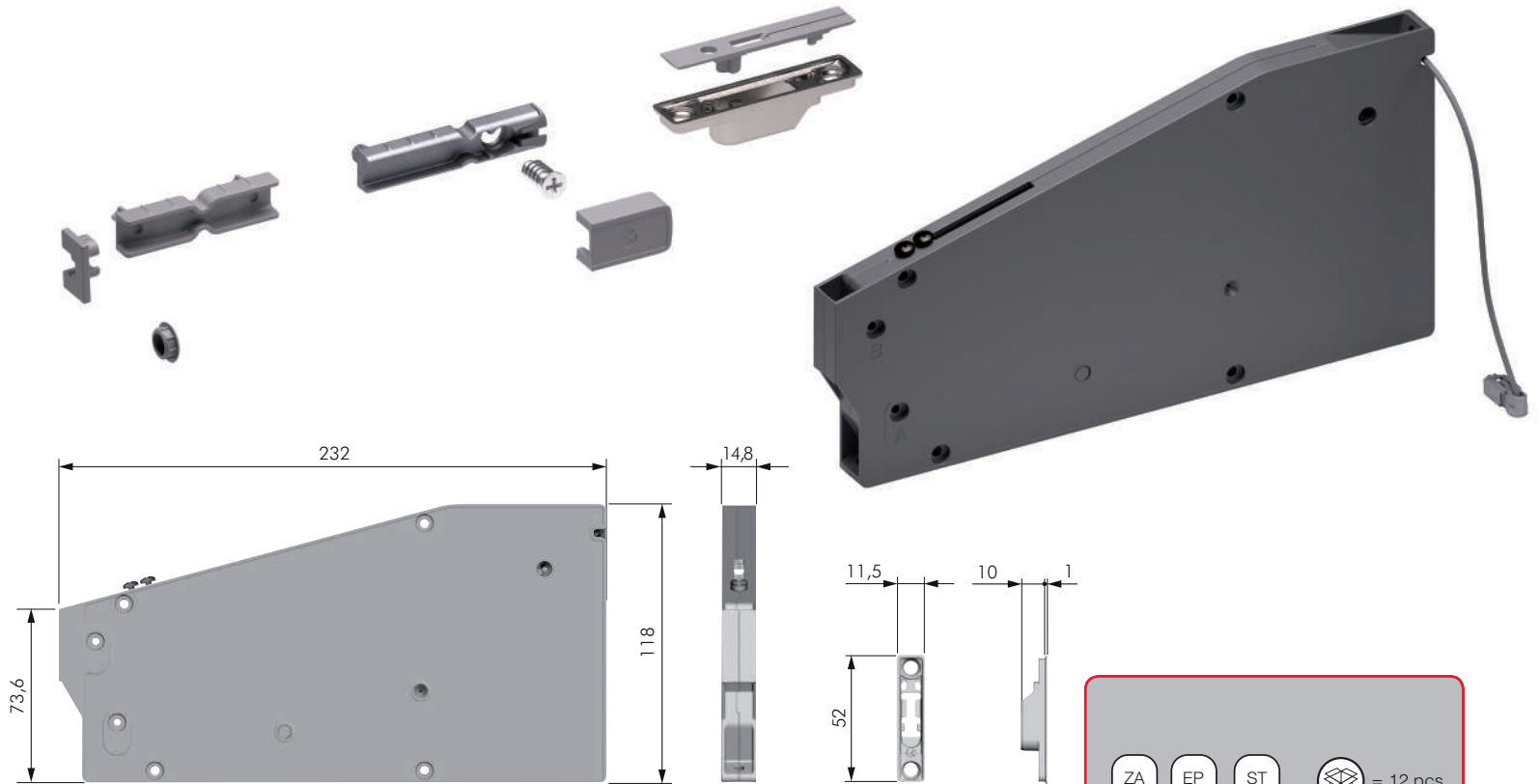


WIRE CUTTING WITH UNMOUNTED MECHANISM

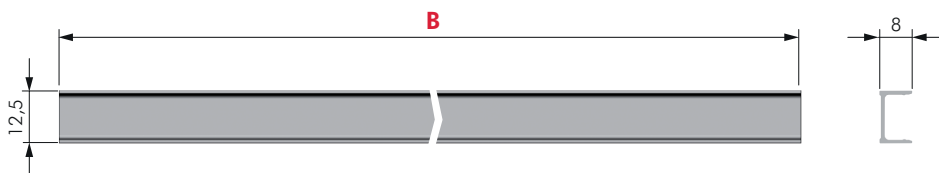


WIRE CUTTING WITH MOUNTED MECHANISM

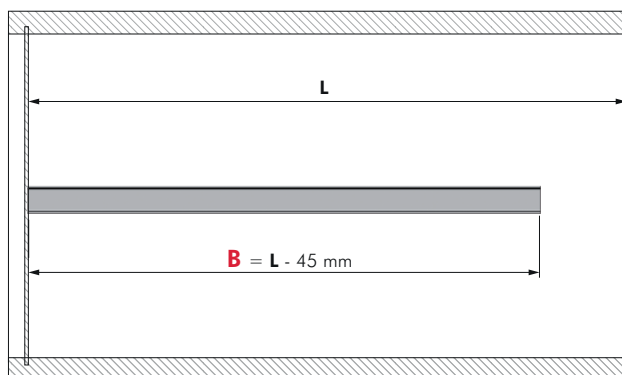




ZA	EP	ST	= 12 pcs.
		46006000YA A = 600 mm	
		4600_0000YA A = _000 mm	



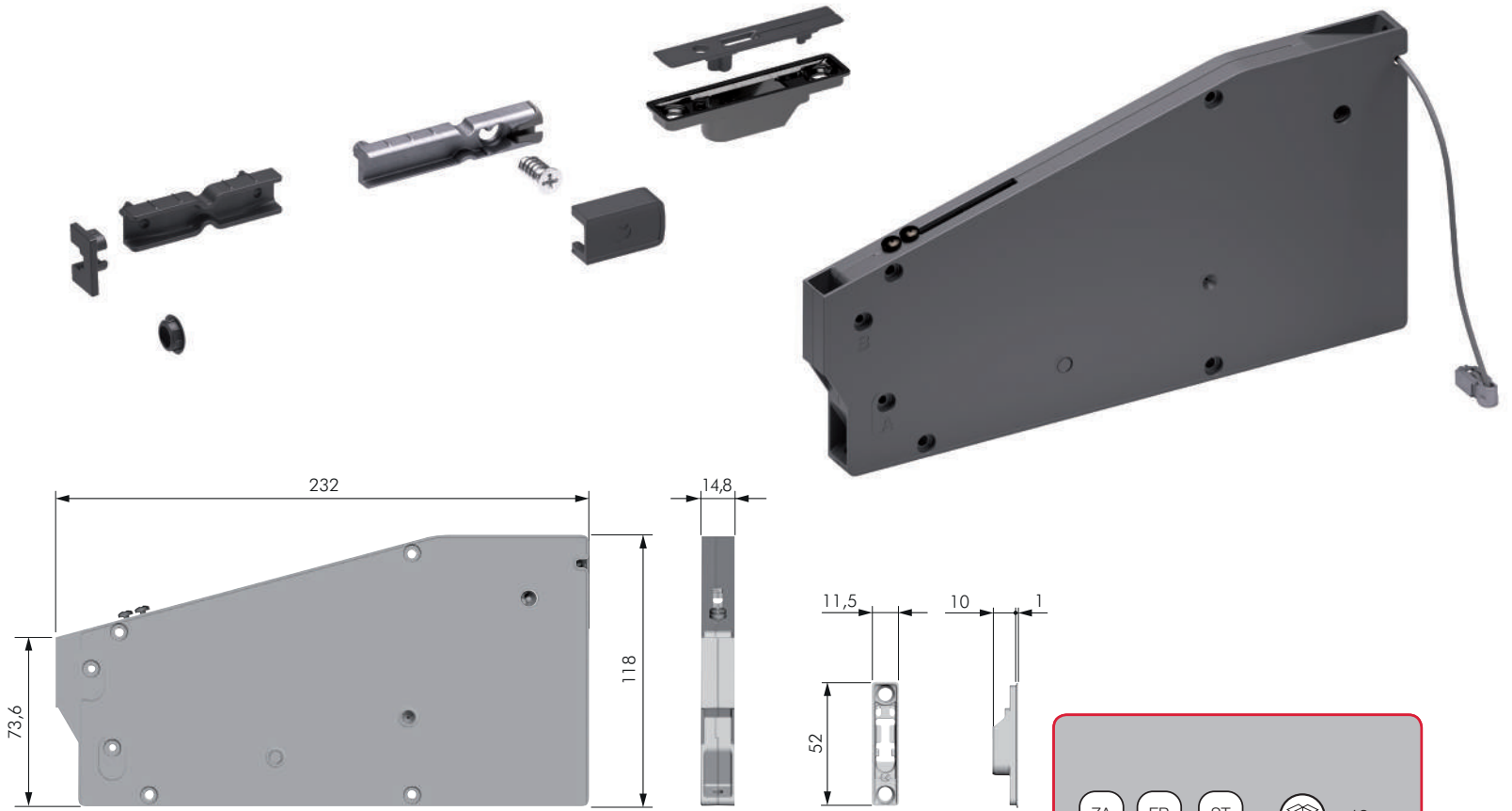
CUT TO SIZE RULE:



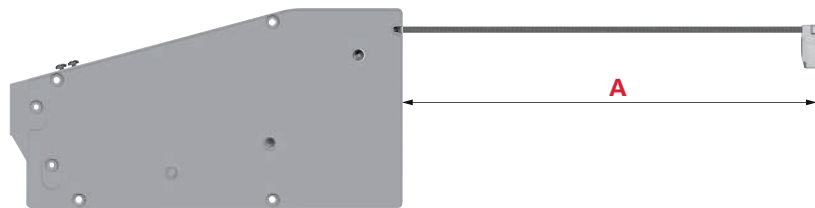
AL	= 12 pcs.		
		46205500UT B = 550 mm	
		4620_0000UT B = _000 mm	



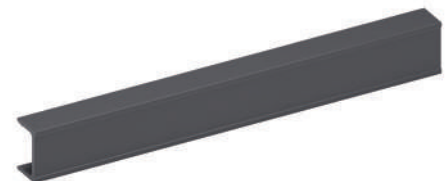
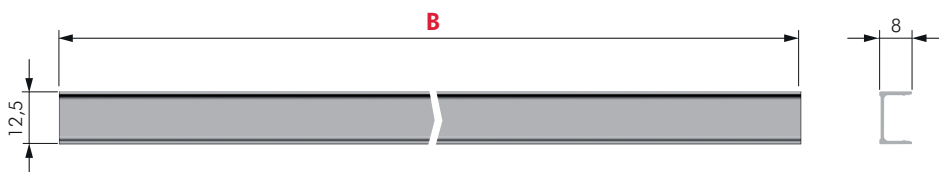
OPENING SYSTEMS FOR LIFT UP AND DROP DOWN DOORS



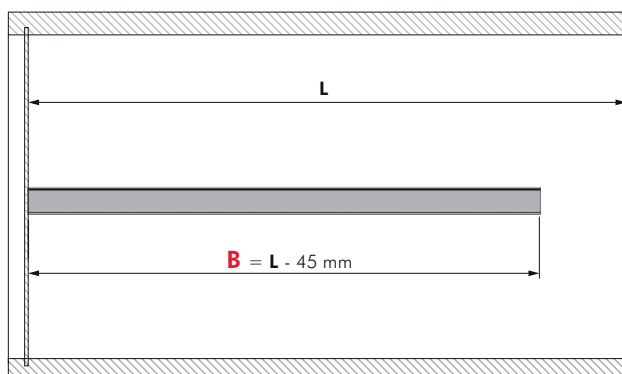
ZA	EP	ST	= 12 pcs.
46006000YQ	A = 600 mm		
4600_0000YQ	A = _000 mm		



8



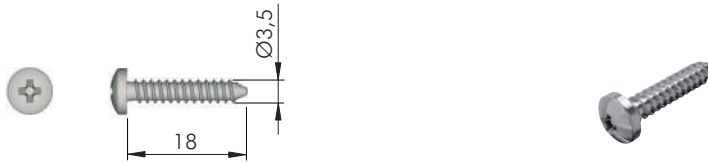
CUT TO SIZE RULE:



AL	= 12 pcs.
46205500FV	B = 550 mm
4620_0000FV	B = _000 mm



ACCESSORIES FOR MECHANISM FIXING



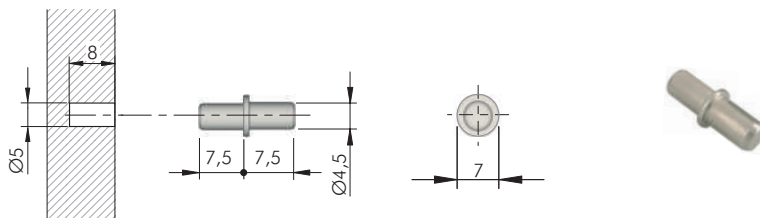
= Ø 3 mm

= PZ2

ST

= 10.000 pcs.

|
60103150Z^N



= Ø 5 mm

ST

= 5.000 pcs.

|
10101010Z^N



ACCESSORY FOR DOOR BRACKET FIXING



= Ø 3 mm



= PZ2

ST

= 10.000 pcs.

|
60101390Z^N

8



ACCESSORY FOR LOCKING THE GRUB SCREW



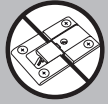
= S 1,5 mm

ST

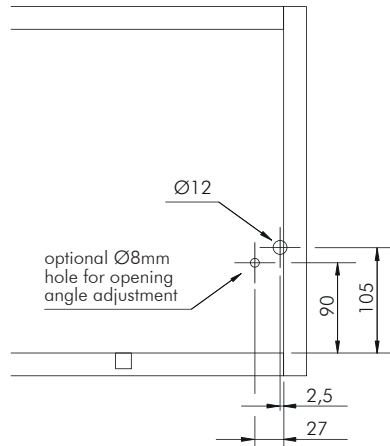
= 1.000 pcs.

|
62501050Z^N

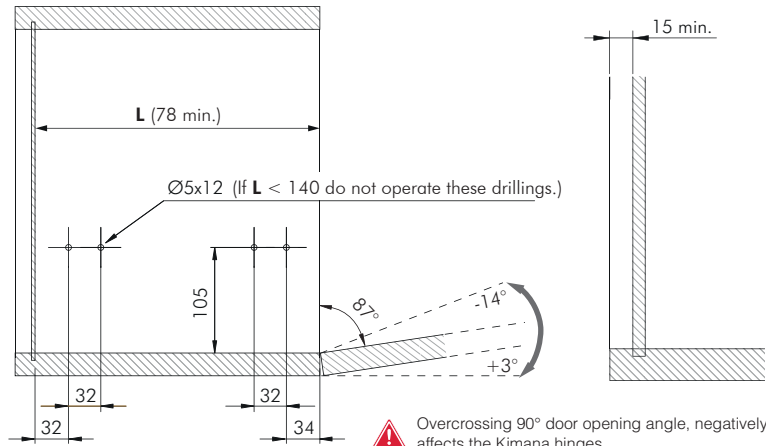
KIARO WITH KIMANA HINGE



BACK-PANEL DRILLING OPERATIONS

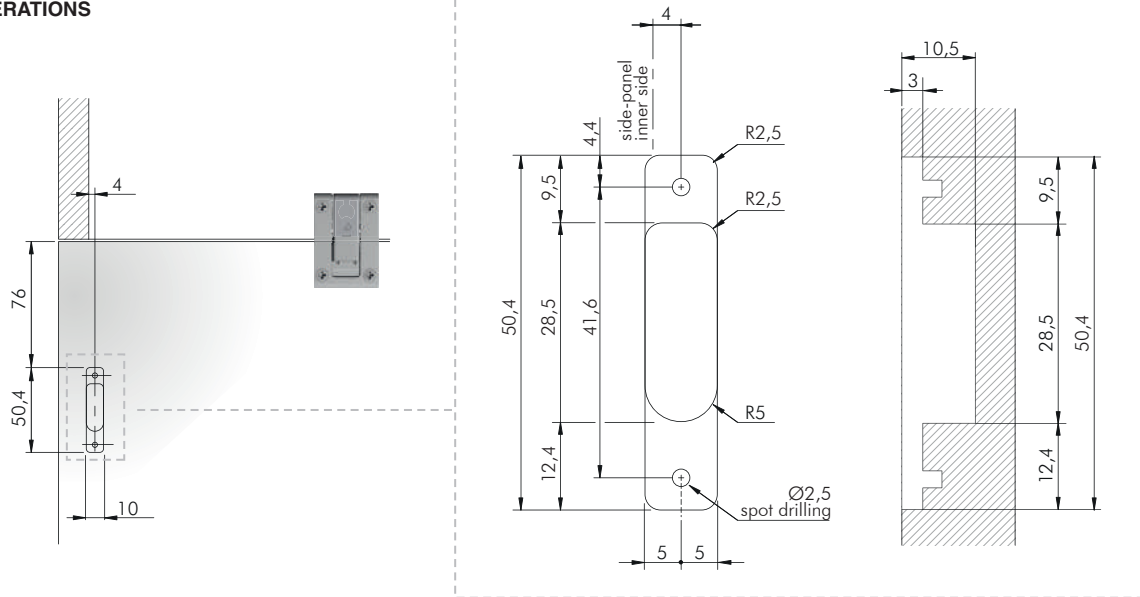


SIDE-PANEL DRILLING OPERATIONS



In case of door without handles it is recommended to use **K Push Tech with buffer**.

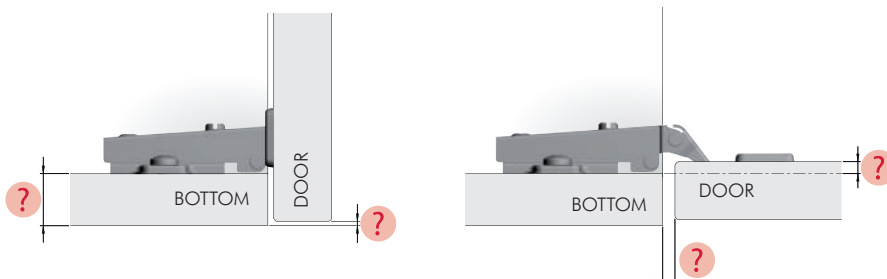
DOOR PANEL DRILLING OPERATIONS



KIARO WITH STANDARD UNSPRUNG HINGES



In case other hinges than KIMANA are used, it is necessary to contact an authorized dealer for a correct drilling scheme. For this purpose, use the form at the end of the KIARO section to provide the required specifications.





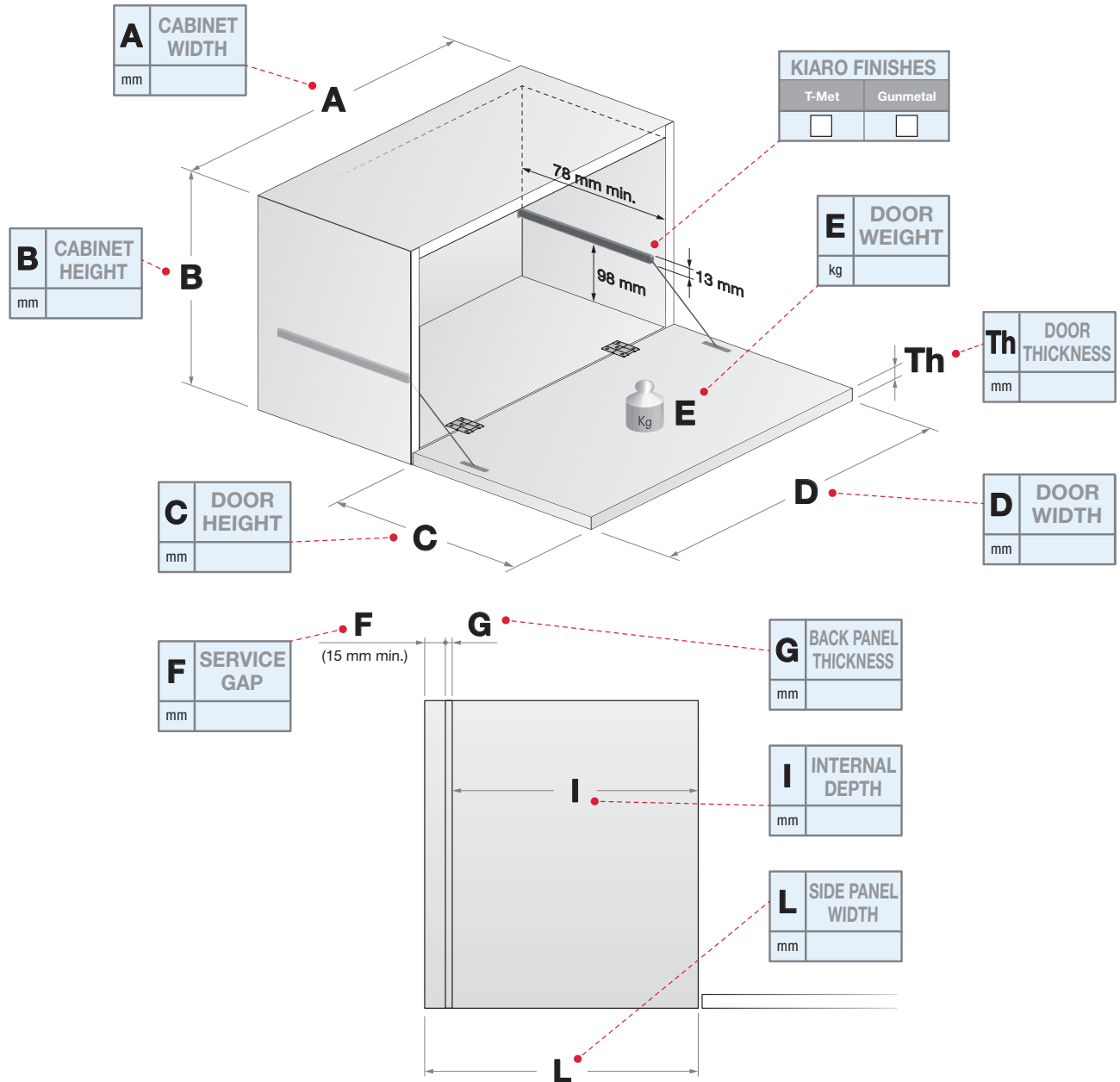
Please photocopy, fill in and send back to your authorized reseller

DATE



CUSTOMER:

REFERENCE:



8

KIND OF HINGES



KIMANA hinges
(Recommended)



STANDARD UNSPRUNG hinges

Please specify producer, article code, mounting plate

Other hinges

Please specify producer, article code, mounting plate



FLAP hinges

Please, fill-in with correct dimensions

