

LINK OPENING SYSTEM



OPENING SYSTEMS FOR FLAP AND DROP DOWN DOORS



CYMISA

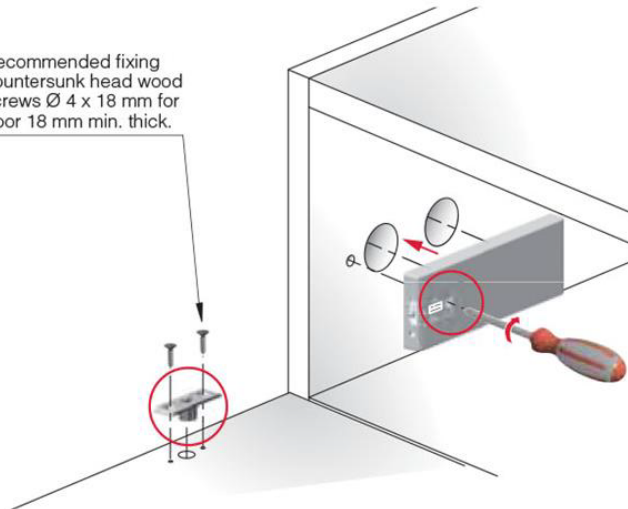


INSTALLATION

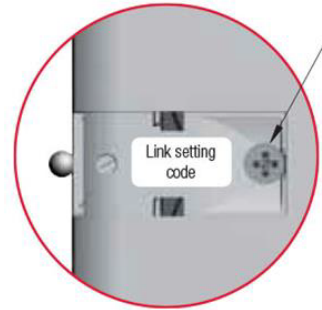


The door bracket has to be placed with the narrow part of the drop-shaped slot facing the cabinet.

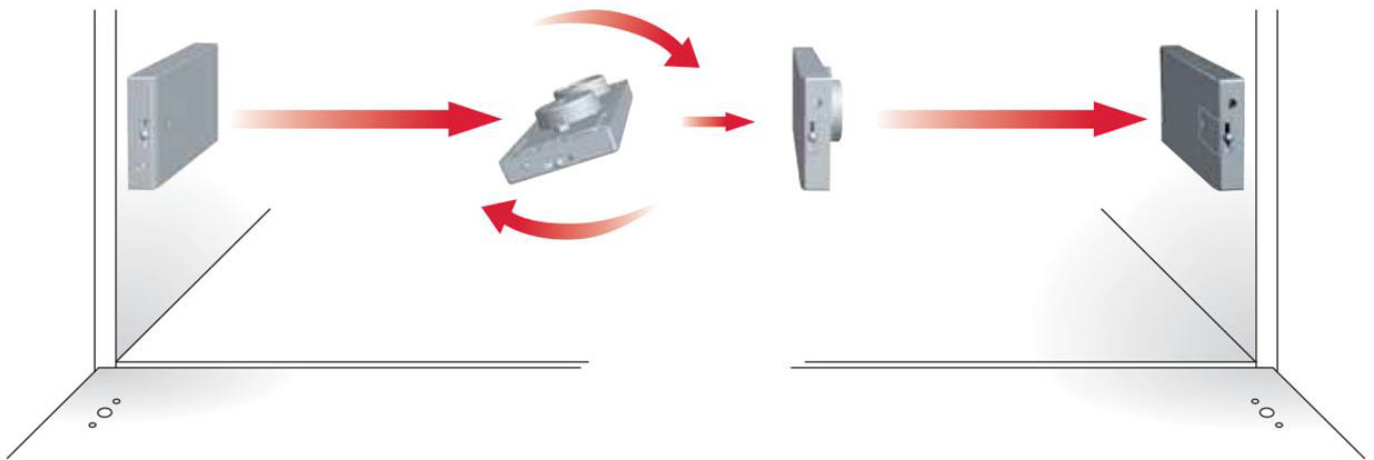
Recommended fixing countersunk head wood screws $\varnothing 4 \times 18$ mm for door 18 mm min. thick.



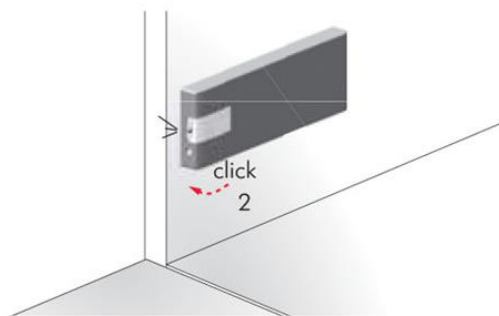
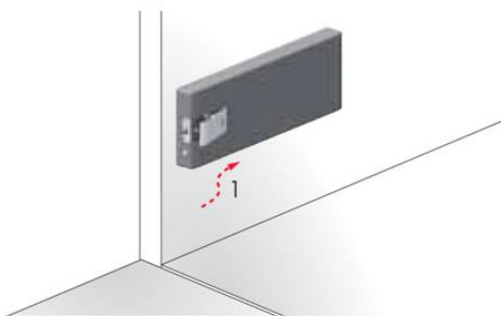
Pre-inserted screw $\varnothing 3,5 \times 16$ mm - PZ2.



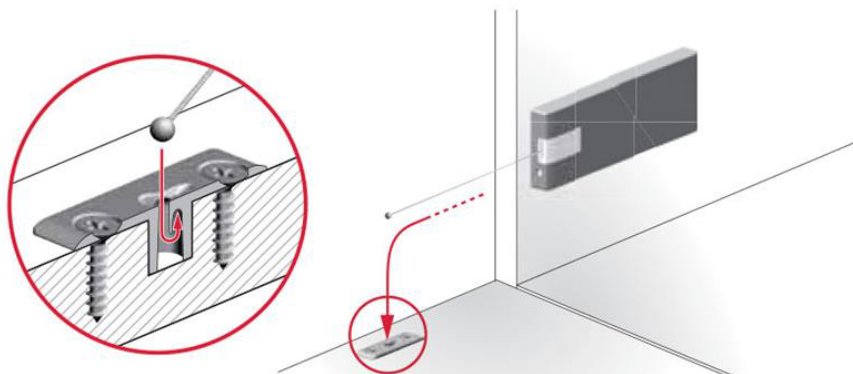
UNHANDED MECHANISM



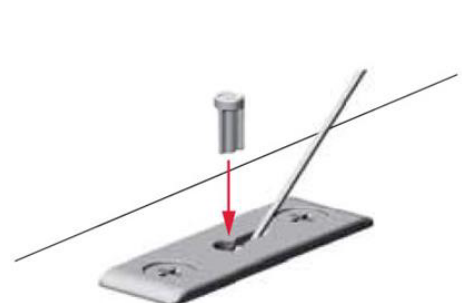
COVER CAP INSERTION



METAL WIRE INSERTION ONTO THE DOOR BRACKET

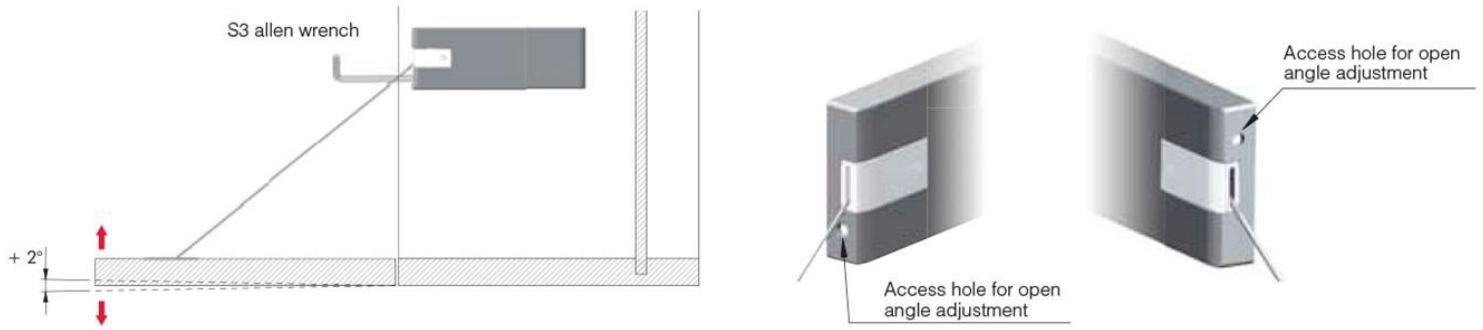


PLASTIC WIRE LOCKING

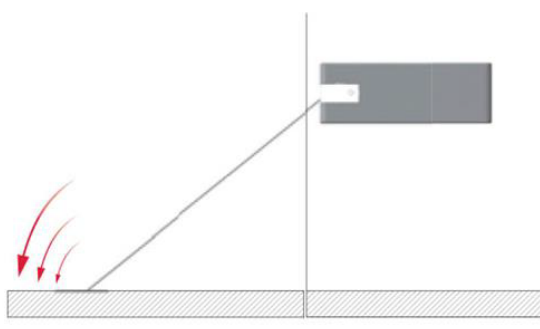




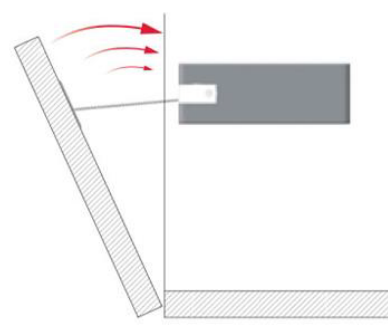
ADJUSTMENT



SOFT OPENING

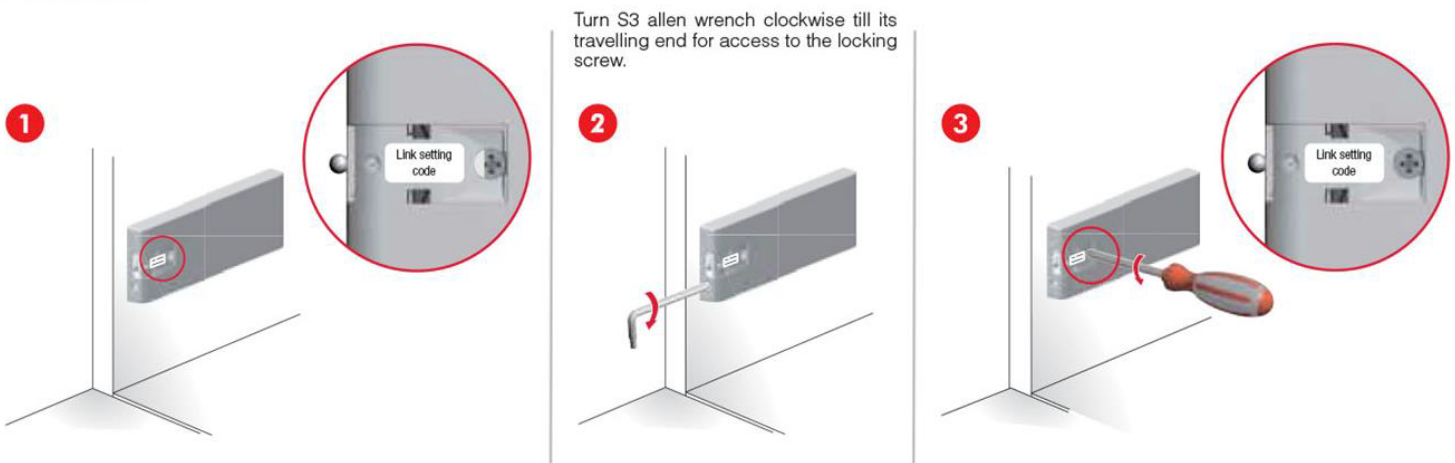


SMOOTH CLOSING



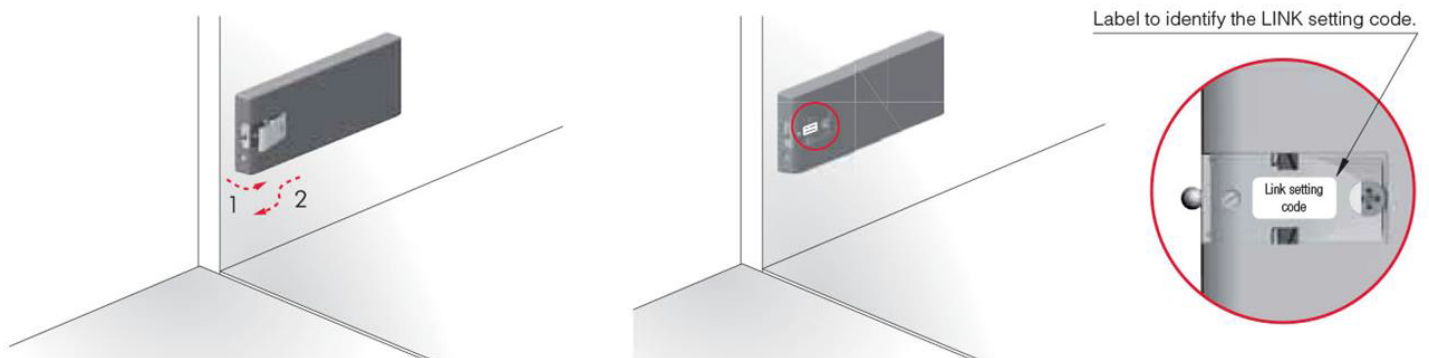
Soft opening and smooth closing are guaranteed only when opening and closing cycles are fully carried out.

LINK REMOVAL

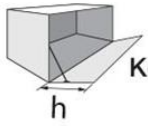


Turn S3 allen wrench clockwise till its travelling end for access to the locking screw.

LINK SETTINGS IDENTIFICATION



LINK



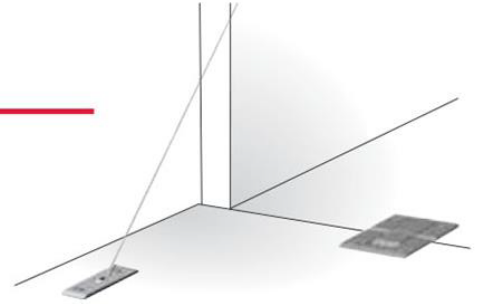
Kg = Door weight including the possible handle.

Kg	Link	h																				
		250		275		300		325		350		375		400		425		450		480		
2,00	x2	-	-	-	-	-	-	-	-	-	-	-	-	-	-	-	-	-	-	-	-	-
	x1	-	-	-	-	-	-	-	-	-	-	-	-	-	-	-	-	-	-	-	-	AL280
2,25	x2	-	-	-	-	-	-	-	-	-	-	-	-	-	-	-	-	-	-	-	-	-
	x1	-	-	-	-	-	-	-	-	-	-	-	-	-	-	-	-	-	-	-	-	AL280
2,50	x2	-	-	-	-	-	-	-	-	-	-	-	-	-	-	-	-	-	-	-	-	-
	x1	-	-	-	-	-	-	-	-	-	-	-	-	-	-	-	-	-	-	-	-	AL280 AL280
2,75	x2	-	-	-	-	-	-	-	-	-	-	-	-	-	-	-	-	-	-	-	-	-
	x1	-	-	-	-	-	-	-	-	-	-	-	-	-	-	-	-	-	-	-	-	AL280 AL280 AQ300
3,00	x2	-	-	-	-	-	-	-	-	-	-	-	-	-	-	-	-	-	-	-	-	-
	x1	-	-	-	-	-	-	-	-	-	-	-	-	-	-	-	-	-	-	-	-	AL280 AL280 AL280 AQ300 AQ300 AQ300
3,25	x2	-	-	-	-	-	-	-	-	-	-	-	-	-	-	-	-	-	-	-	-	-
	x1	-	-	-	-	-	-	-	-	-	-	-	-	-	-	-	-	-	-	-	-	AL280 AL280 AL280 AQ300 AQ300 AQ300
3,50	x2	-	-	-	-	-	-	-	-	-	-	-	-	-	-	-	-	-	-	-	-	-
	x1	-	-	-	-	-	-	-	-	-	-	-	-	-	-	-	-	-	-	-	-	AL280 AL280 AQ300 AQ300 AQ300 AQ300
3,75	x2	-	-	-	-	-	-	-	-	-	-	-	-	-	-	-	-	-	-	-	-	-
	x1	-	-	-	-	-	-	-	-	-	-	-	-	-	-	-	-	-	-	-	-	AL280 AL280 AL280 AQ300 AQ300 AQ300
4,00	x2	-	-	-	-	-	-	-	-	-	-	-	-	-	-	-	-	-	-	-	-	-
	x1	-	-	-	-	-	-	-	-	-	-	-	-	-	-	-	-	-	-	-	-	AL280 AL280 AL280 AQ300 AQ300 AQ300
4,25	x2	-	-	-	-	-	-	-	-	-	-	-	-	-	-	-	-	-	-	-	-	-
	x1	-	-	-	-	-	-	-	-	-	-	-	-	-	-	-	-	-	-	-	-	AL280 AL280 AL280 AQ300 AQ300 AQ300
4,50	x2	-	-	-	-	-	-	-	-	-	-	-	-	-	-	-	-	-	-	-	-	-
	x1	-	-	-	-	-	-	-	-	-	-	-	-	-	-	-	-	-	-	-	-	AL280 AL280 AL280 AQ300 AQ300 AQ300
4,75	x2	-	-	-	-	-	-	-	-	-	-	-	-	-	-	-	-	-	-	-	-	-
	x1	-	-	-	-	-	-	-	-	-	-	-	-	-	-	-	-	-	-	-	-	AL280 AL280 AL280 AQ300 AQ300 AQ300
5,00	x2	-	-	-	-	-	-	-	-	-	-	-	-	-	-	-	-	-	-	-	-	-
	x1	-	-	-	-	-	-	-	-	-	-	-	-	-	-	-	-	-	-	-	-	AL280 AL280 AL280 AQ300 AQ300 AQ300
5,25	x2	-	-	-	-	-	-	-	-	-	-	-	-	-	-	-	-	-	-	-	-	-
	x1	-	-	-	-	-	-	-	-	-	-	-	-	-	-	-	-	-	-	-	-	AL280 AL280 AL280 AQ300 AQ300 AQ300
5,50	x2	-	-	-	-	-	-	-	-	-	-	-	-	-	-	-	-	-	-	-	-	-
	x1	-	-	-	-	-	-	-	-	-	-	-	-	-	-	-	-	-	-	-	-	AL280 AL280 AL280 AQ300 AQ300 AQ300
5,75	x2	-	-	-	-	-	-	-	-	-	-	-	-	-	-	-	-	-	-	-	-	-
	x1	-	-	-	-	-	-	-	-	-	-	-	-	-	-	-	-	-	-	-	-	AL280 AL280 AL280 AQ300 AQ300 AQ300
6,00	x2	-	-	-	-	-	-	-	-	-	-	-	-	-	-	-	-	-	-	-	-	-
	x1	-	-	-	-	-	-	-	-	-	-	-	-	-	-	-	-	-	-	-	-	AL280 AL280 AL280 AQ300 AQ300 AQ300
6,25	x2	-	-	-	-	-	-	-	-	-	-	-	-	-	-	-	-	-	-	-	-	-
	x1	-	-	-	-	-	-	-	-	-	-	-	-	-	-	-	-	-	-	-	-	AL280 AL280 AL280 AQ300 AQ300 AQ300
6,50	x2	-	-	-	-	-	-	-	-	-	-	-	-	-	-	-	-	-	-	-	-	-
	x1	-	-	-	-	-	-	-	-	-	-	-	-	-	-	-	-	-	-	-	-	AL280 AL280 AL280 AQ300 AQ300 AQ300
6,75	x2	-	-	-	-	-	-	-	-	-	-	-	-	-	-	-	-	-	-	-	-	-
	x1	-	-	-	-	-	-	-	-	-	-	-	-	-	-	-	-	-	-	-	-	AL280 AL280 AL280 AQ300 AQ300 AQ300
7,00	x2	-	-	-	-	-	-	-	-	-	-	-	-	-	-	-	-	-	-	-	-	-
	x1	-	-	-	-	-	-	-	-	-	-	-	-	-	-	-	-	-	-	-	-	AL280 AL280 AL280 AQ300 AQ300 AQ300
7,50	x2	-	-	-	-	-	-	-	-	-	-	-	-	-	-	-	-	-	-	-	-	-
	x1	-	-	-	-	-	-	-	-	-	-	-	-	-	-	-	-	-	-	-	-	AL280 AL280 AL280 AQ300 AQ300 AQ300
8,00	x2	-	-	-	-	-	-	-	-	-	-	-	-	-	-	-	-	-	-	-	-	-
	x1	-	-	-	-	-	-	-	-	-	-	-	-	-	-	-	-	-	-	-	-	AL280 AL280 AL280 AQ300 AQ300 AQ300
8,25	x2	-	-	-	-	-	-	-	-	-	-	-	-	-	-	-	-	-	-	-	-	-
	x1	-	-	-	-	-	-	-	-	-	-	-	-	-	-	-	-	-	-	-	-	AL280 AL280 AL280 AQ300 AQ300 AQ300
8,50	x2	-	-	-	-	-	-	-	-	-	-	-	-	-	-	-	-	-	-	-	-	-
	x1	-	-	-	-	-	-	-	-	-	-	-	-	-	-	-	-	-	-	-	-	AL280 AL280 AL280 AQ300 AQ300 AQ300
8,75	x2	-	-	-	-	-	-	-	-	-	-	-	-	-	-	-	-	-	-	-	-	-
	x1	-	-	-	-	-	-	-	-	-	-	-	-	-	-	-	-	-	-	-	-	AL280 AL280 AL280 AQ300 AQ300 AQ300
9,00	x2	-	-	-	-	-	-	-	-	-	-	-	-	-	-	-	-	-	-	-	-	-
	x1	-	-	-	-	-	-	-	-	-	-	-	-	-	-	-	-	-	-	-	-	AL280 AL280 AL280 AQ300 AQ300 AQ300

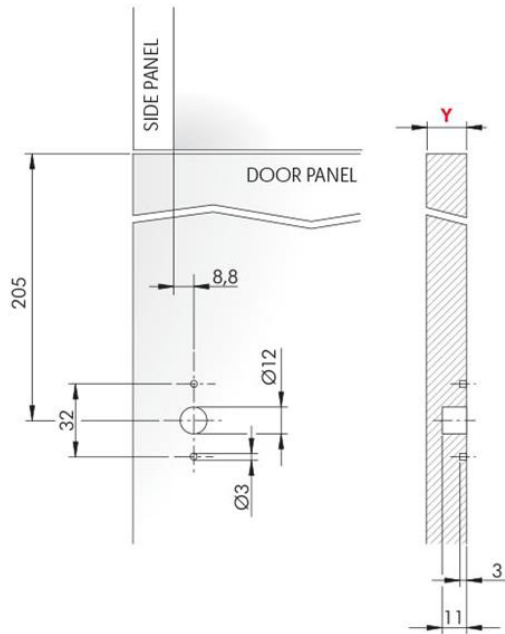
⚠ Estos resultados son experimentales, favor de realizar pruebas.



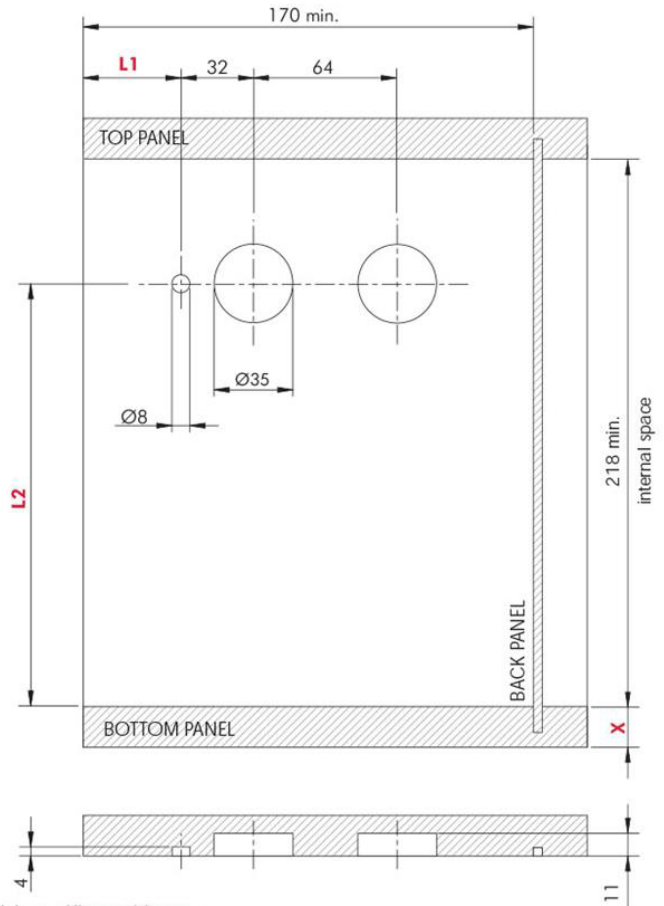
LINK WITH KIMANA HINGE



DOOR PANEL DRILLING PLAN

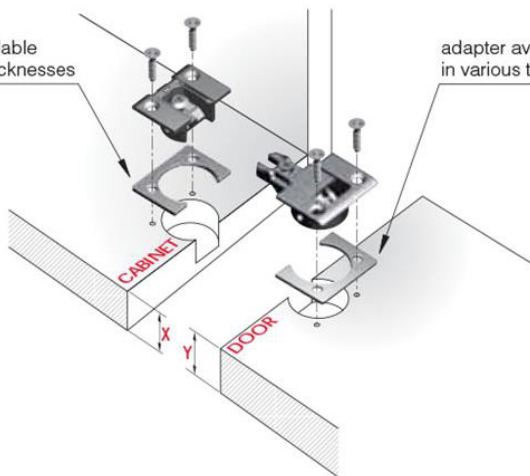


SIDE PANEL DRILLING PLAN



The dimensions of the above drilling plan refer to carcasses which use Kimana hinges.

adapter available in various thicknesses



adapter available in various thicknesses

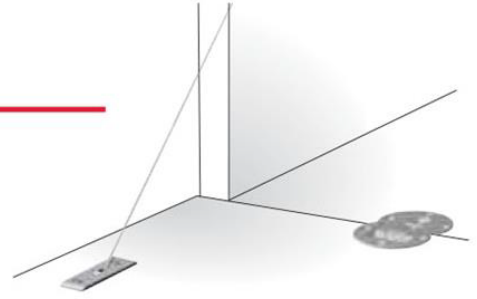
X +	Y +	L1	L2
16 + 4	16 + 2	43	190
16 + 4	19	44	190
18 + 2	18	44	189
18 + 2	19	44	189
19	16 + 2	42	187
19	19	43	187
20	20	43	187



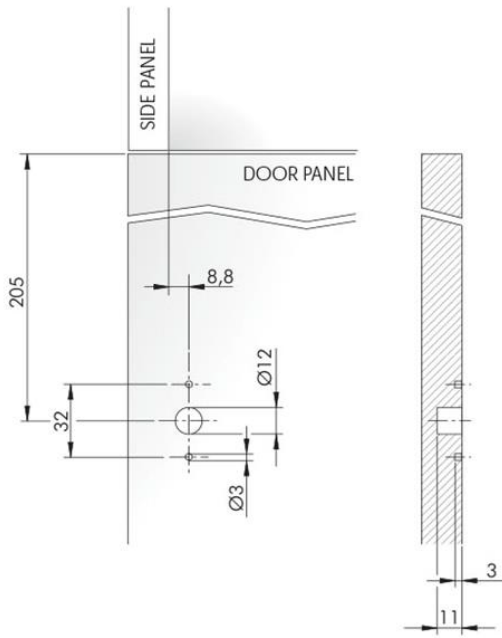
For Kimana and adapter details refer to section "HINGES".



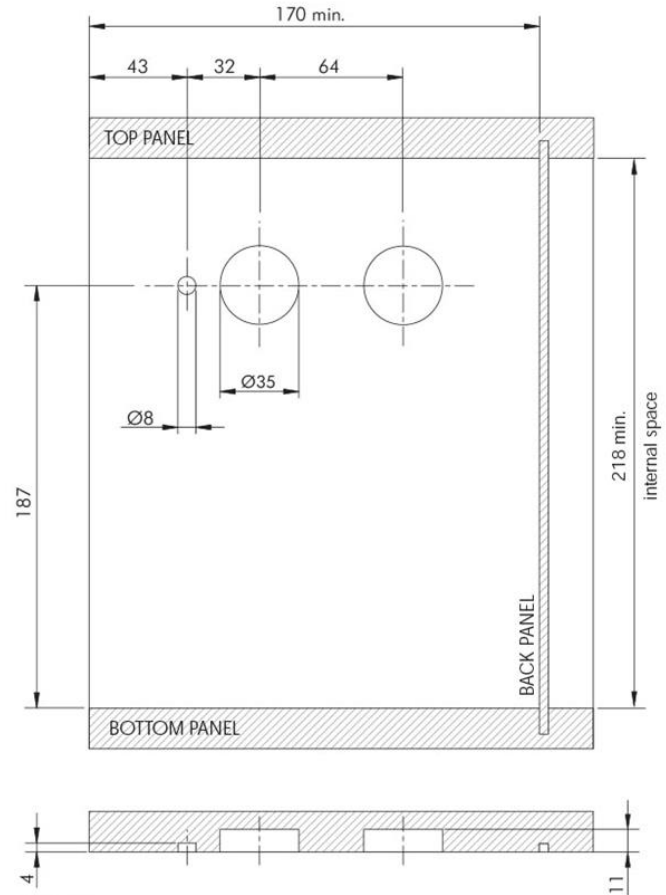
LINK WITH FLAP HINGES



DOOR PANEL DRILLING PLAN

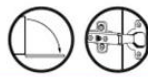


SIDE PANEL DRILLING PLAN



The dimensions of the drilling plan refer to carcasses which use flap hinges.

LINK WITH STANDARD UNSPRUNG HINGES



In case other hinges than KIMANA are used, it is necessary to contact an authorized dealer for a correct drilling scheme. For this purpose, use the form at the end of the LINK section to provide the required specifications.

