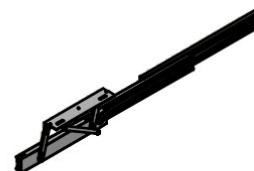


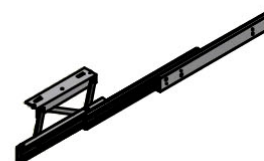
# OPLA' TOP

## ISTRUZIONI DI MONTAGGIO ASSEMBLY INSTRUCTIONS

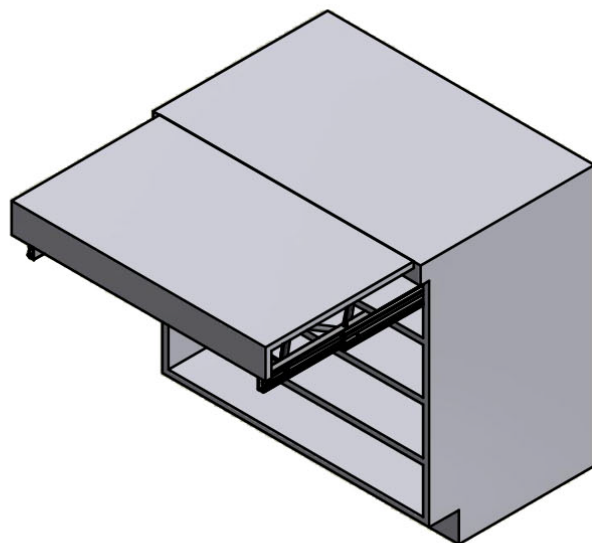
## CONTENUTO DELLA CONFEZIONE INCLUDED IN THE PACKAGING



GUIDE  
SLIDES



ASTA  
BAR



### SACCHETTO ACCESSORI - ACCESSORIES



A. Chiave esa. n.5 - n.5 Allen key



B. Chiave esa. n.3 - n.3 Allen key



C. Molla - Spring (x2)



D. Ammortizzatore - Dumper (x2)



E. Bussola M6 12x8 mm - Bush M6 12x8 mm (x12)



F. Rondella Ø12x1.35 - Washer Ø12x1.35 (x4)



G. Vite TPS M5x12 - M5x12 tapered screw (x2)



H. Vite TCCE M6x12 - Socked head cap screw M6x12 (x12)



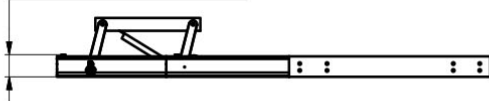
I. Vite TCBCE M5x10 ISO 7380 - M5x10 ISO 7380 screw (x8)



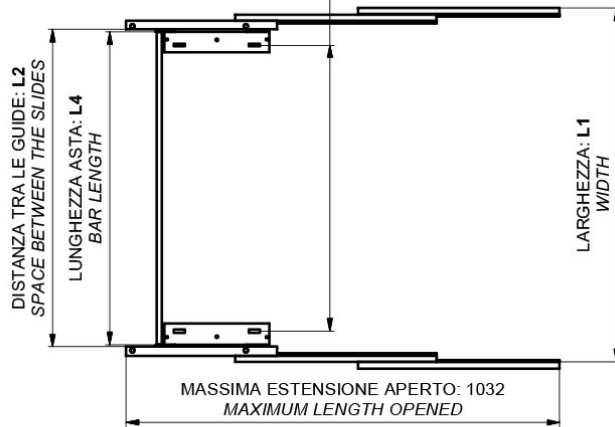
J. Distanziale per spalla - Side spacer (x20)

# DIMENSIONI DI MASSIMA GENERAL DIMENSIONS

INGOMBRO IN ALTEZZA: 55  
OVERALL HEIGHT

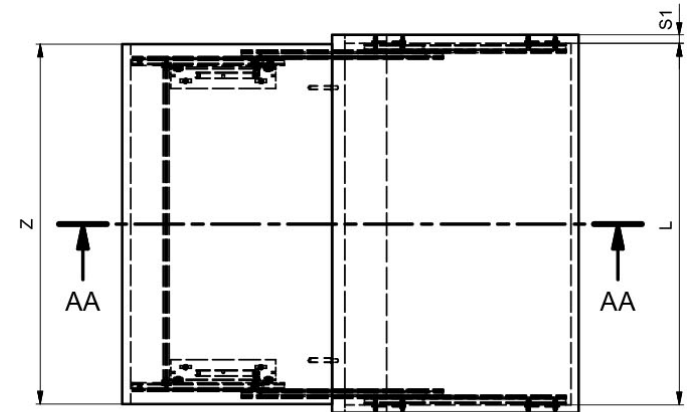
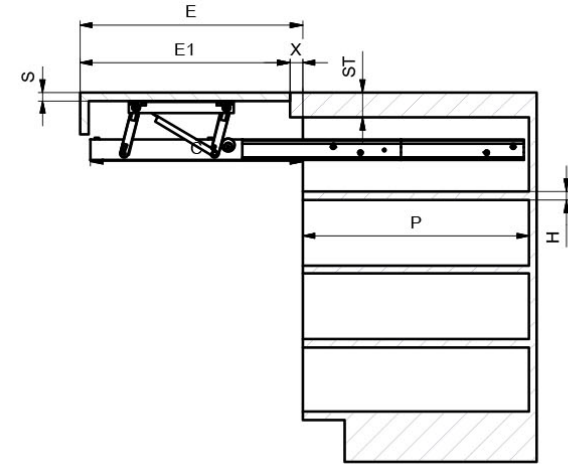


INTERASSE FORI FISSAGGIO PIANO: L3  
DISTANCE BETWEEN FIXING PLANE HOLES



MODELLO - MODEL	MODULO - MODULE	L1 (mm)	L2 (mm)	L3 (mm)	L4 (mm)
411/78.1780.22	1200	1160-1170	1055.5-1065.5	981-991	1045.5

# DIMENSIONI GENERALI MOBILE GENERAL CABINET DIMENSIONS



DIMENSIONE - DIMENSION	SIMBOLO - SYMBOL	mm
ALTEZZA - HIGHT	H	MIN: 75
PROFONDITA' - DEPTH	P	MIN: 540
LARGHEZZA - WIDTH	L	MIN: 410 MAX: 1170
SPESSORE PIANO - PLANE THICKNESS	S	20-60
SPESSORE SPALLE - SIDE THICKNESS	S1	15-20
SPESSORE TOP - TOP THICKNESS	ST	20-60
LARGHEZZA PIANI - PLANE WIDTH	Z	L - 5
SPORGENZA - PROTRUSION	X	-
APERTURA PIANI - OPENING PLANE	E	500
LUNGHEZZA PIANO - LENGTH PLANE	E1	E-X
APERTURA MECCANISMO - OPENING MECHANISM	C	505

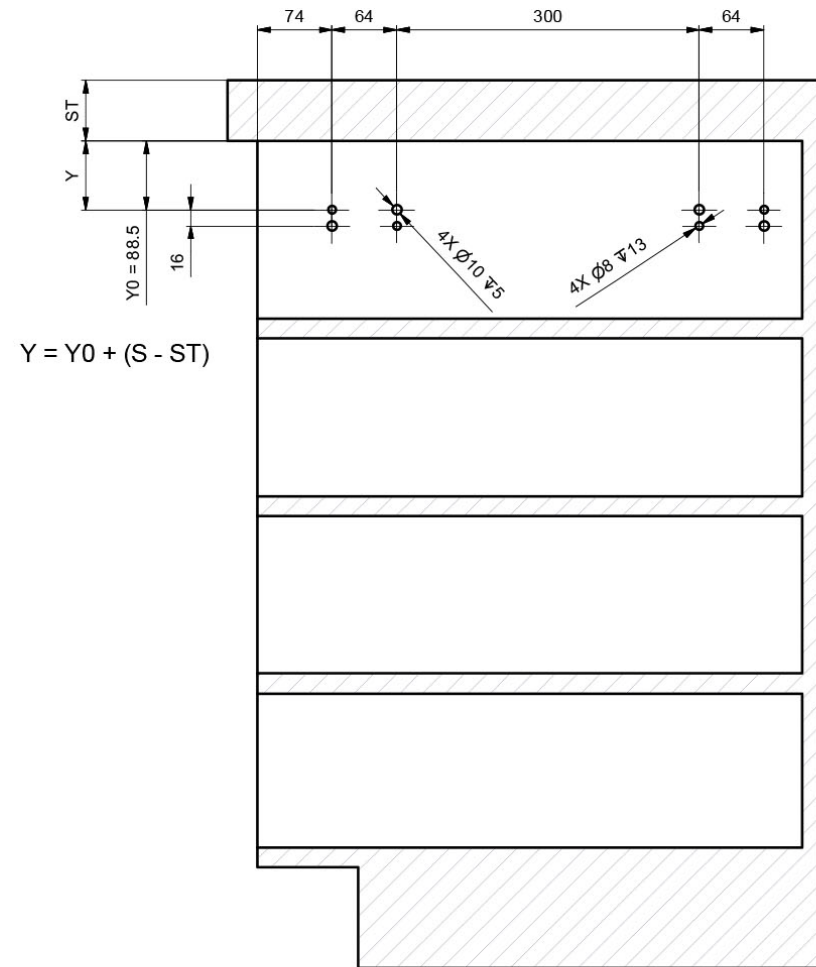
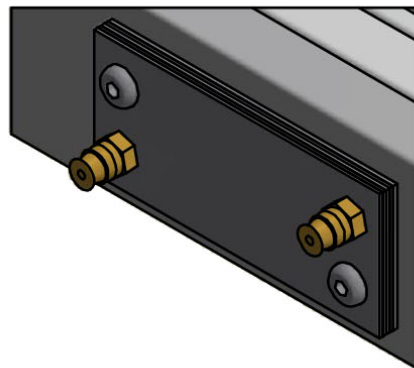
# POSIZIONE FORI FISSAGGIO MECCANISMO HOLES FOR MECHANISM POSITION

Per spalle di spessore < 20 mm usare i distanziali in ferro a corredo fissandoli sulle guide esterne.

*For cabinet sides <20 mm use included steel spacers fixing them on the external slides*

Spalla da 20 mm - nessun distanziale  
 Spalla da 19 mm - 1 distanziale  
 Spalla da 18 mm - 2 distanziale  
 Spalla da 17 mm - 3 distanziale  
 Spalla da 16 mm - 4 distanziale  
 Spalla da 15 mm - 5 distanziale

*Side thickness 20 mm - no spacer  
 Side thickness 19 mm - 1 spacer  
 Side thickness 18 mm - 2 spacers  
 Side thickness 17 mm - 3 spacers  
 Side thickness 16 mm - 4 spacers  
 Side thickness 15 mm - 5 spacers*

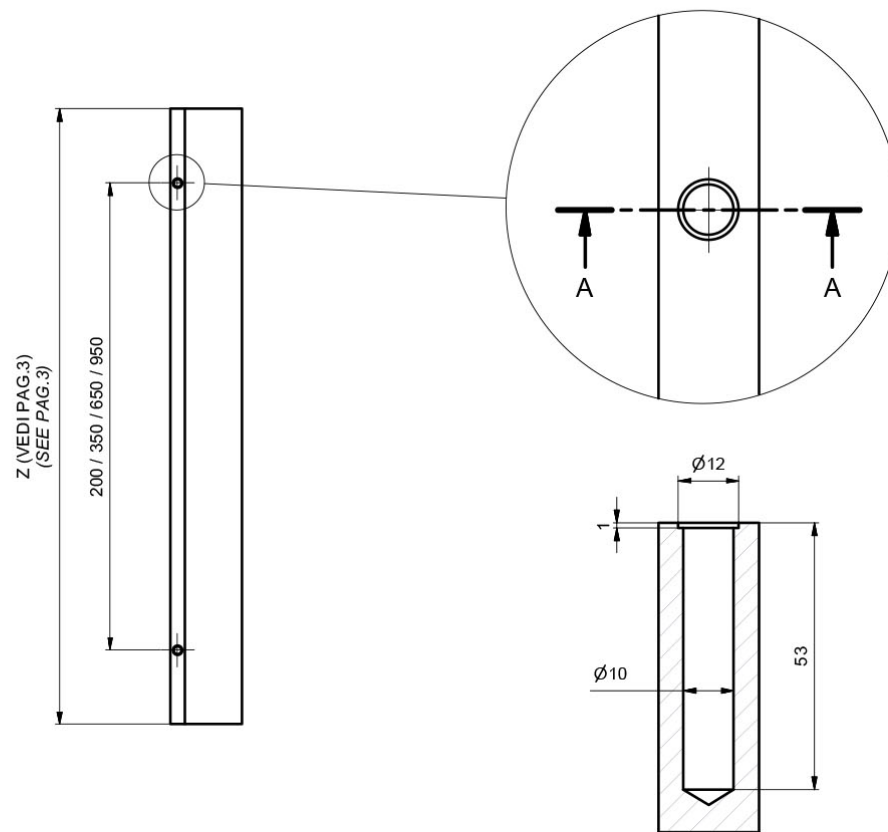
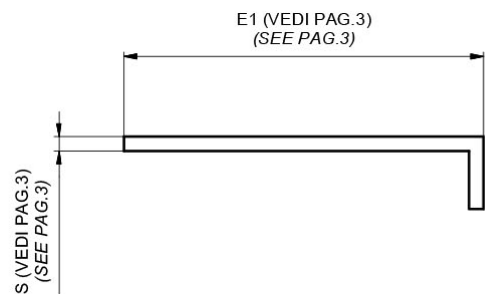
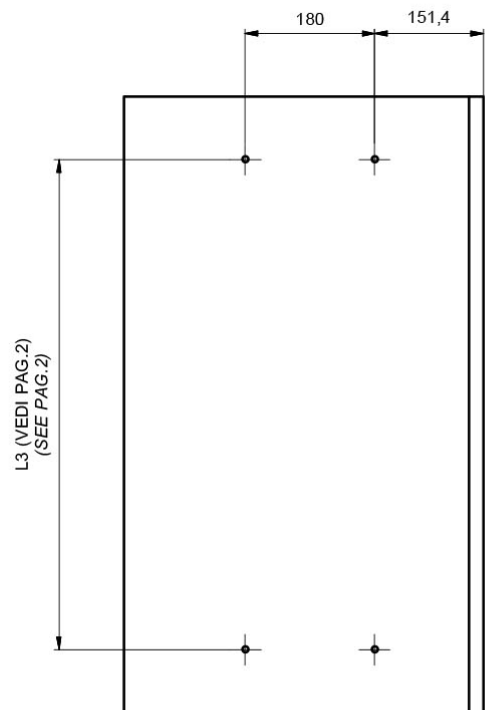


## SACCHETTO ACCESSORI - ACCESSORIES

-  B. Chiave esa. n.3 - n.3 Allen key
-  J. Distanziale per spalla - Side spacer (x 20)
-  E. Bussola in ottone M6 12x8 mm - M6 12x8 mm brass bush (x 8)
-  I. Vite TCBCE M5x10 ISO 7380 - M5x10 ISO 7380 screw (x 8)

# DIMENSIONE PIANO

## PLANE SIZE

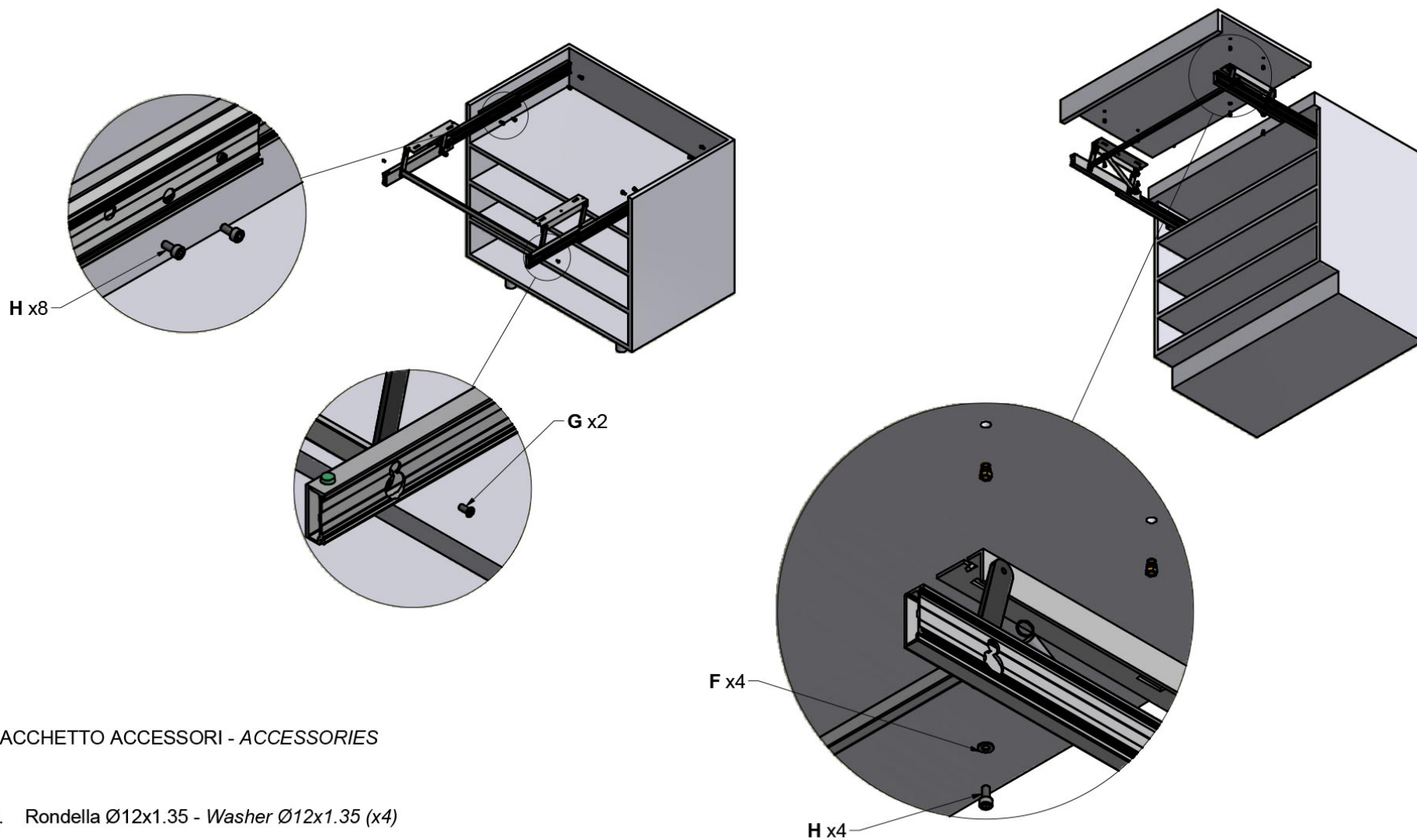


### SACCHETTO ACCESSORI - ACCESSORIES

D. Ammortizzatore - *Dumper* (x2)

E. Bussola M6 12x8 mm - *Bush M6 12x8 mm* (x4)

# MONTAGGIO DEL MECCANISMO SUL MOBILE MOUNTING OF THE MECHANISM ON THE CABINET



SACCHETTO ACCESSORI - ACCESSORIES

F. Rondella Ø12x1.35 - Washer Ø12x1.35 (x4)

G. Vite TPS M5x12 - M5x12 tapered screw (x2)

H. Vite TCCE M6x12 - Socked head cap screw M6x12 (x12)

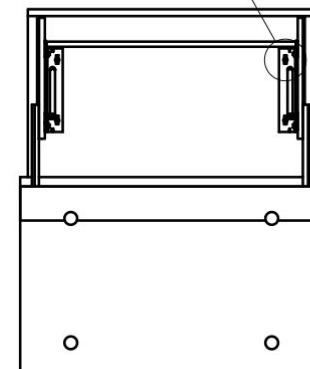
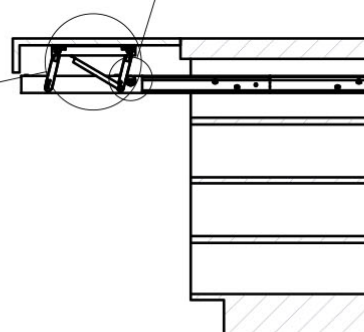
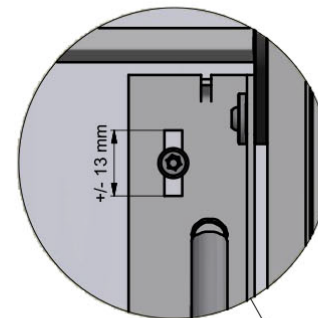
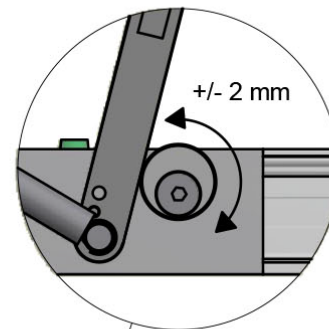
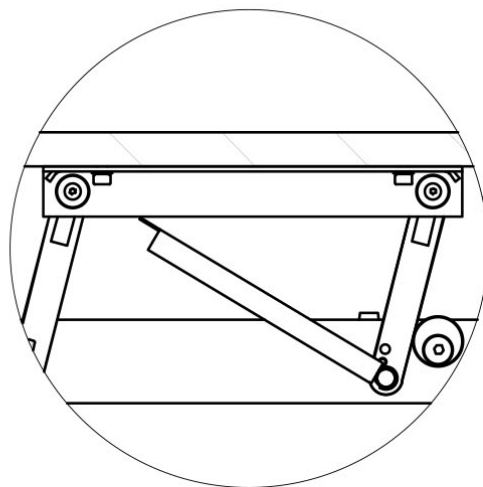
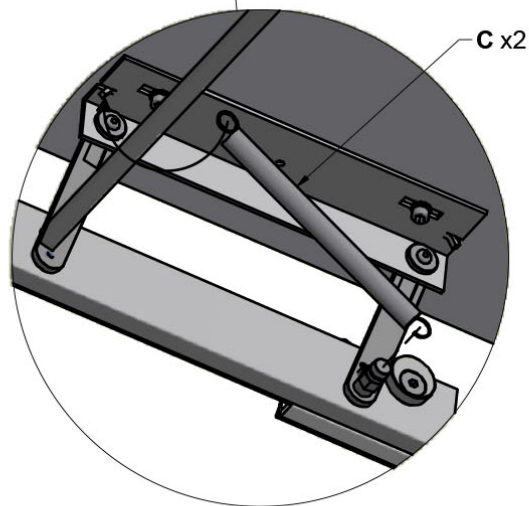
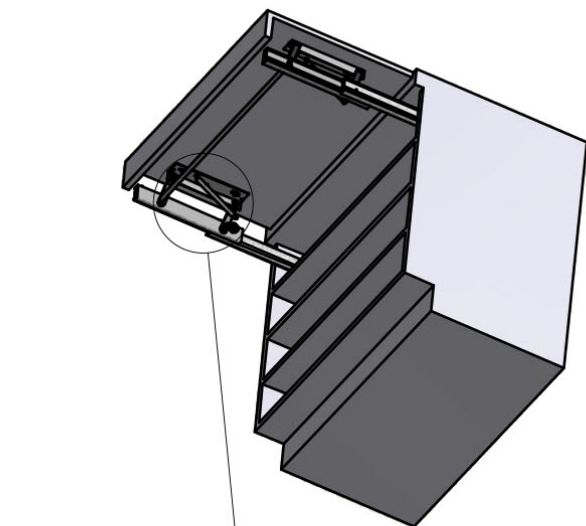


# MONTAGGIO DEL MECCANISMO SUL MOBILE MOUNTING OF THE MECHANISM ON THE CABINET

SACCHETTO ACCESSORI - ACCESSORIES



C. Molla - Spring (x2)



TROVARE LA POSIZIONE E FISSARE IL PIANO  
CON DUE VITI TRUCIOLARI (NON FORNITE)  
FIND POSITION AND FIX THE PLANE WITH  
TWO SCREWS CHIPBOARD (NOT SUPPLIED)