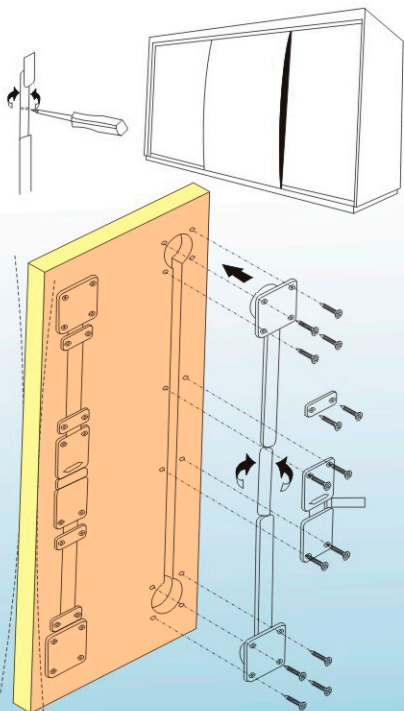


- ① The Screw Bar
- ② Hole
- ③ The Aluminum Decorateal Tube
- ④ The Connected Thread Tube
- ⑤ The Fixing Plates
- ⑥ Decorate Cover Board
- ⑦ Screw

Installation



Introduce:

NEW DOOR STRAIGHTENING SYSTEM, can prevent the straight wood door metamorphosed to other way, and can streng then the intensity of high and thin door. It can be fixed in the new door or resumed (straightened) a door that has been metamorphosed, be applicable for big sliding door and high wardrobe door.

Instruction:

Drill groove 10x12mm & holes ϕ 35x13mm in the door max distance of two holes 2M, cut the screw bar and their aluminum decorated tube according to the holes distance, then screw the screw bars into the middle connected thread tube about 18 mm, adjust the total length same as the distance of the holes. Put the straightening system into the groove & holes; fix the head of two screw bar by screws, and fix two aluminum decorated tube by the 4pcs fixing plates with screws in proper position. Screw the middle connected thread tube till the door resumed straight.