

TARGET J10



TARGET is the new structural connecting fitting conceived by Italiana Ferramenta with high fastening capacity, suitable for mounting with wood dowels.

TARGET is an ideal solution for the installation of cabinets in tight spaces.

TARGET provides the possibility of pre-assembling into the panels without obstructing the packaging.

FEATURES AND BENEFITS

Easy pre-assembling

Simple pre-insertion into the panels. Conceived

Suitable for furniture in kit

Its unique features make **TARGET** the ideal solution for kit furniture.

No hardware kits

There is no need of hardware kits.

High-speed assembling

Mounting is extremely fast and efficient thanks to the pre-assembling of the panels.

Strong structural fastening

The panels are hard and securely fastened, therefore the cabinet is 100% stress-resistant.

Wide range of applications

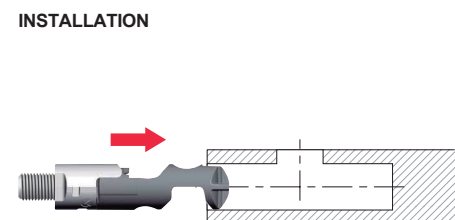
Practical solution for a wide range of applications.

Interzum Award:
Intelligent material & design 2017

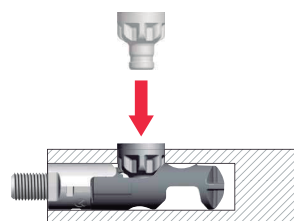
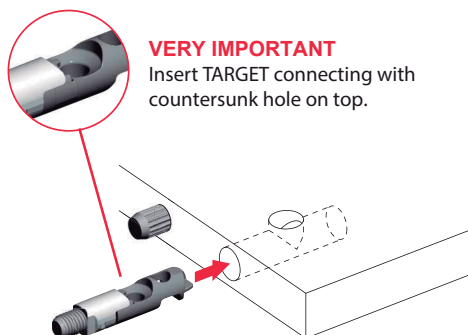
High Product Quality



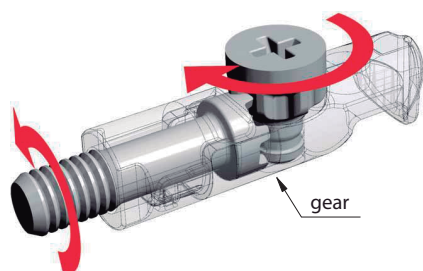
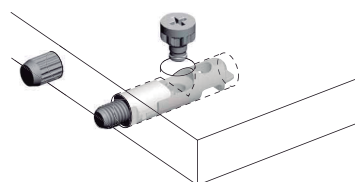
INSTALLATION

**VERY IMPORTANT**

Insert **TARGET** connecting with countersunk hole on top.



Place the pinion screw from above.

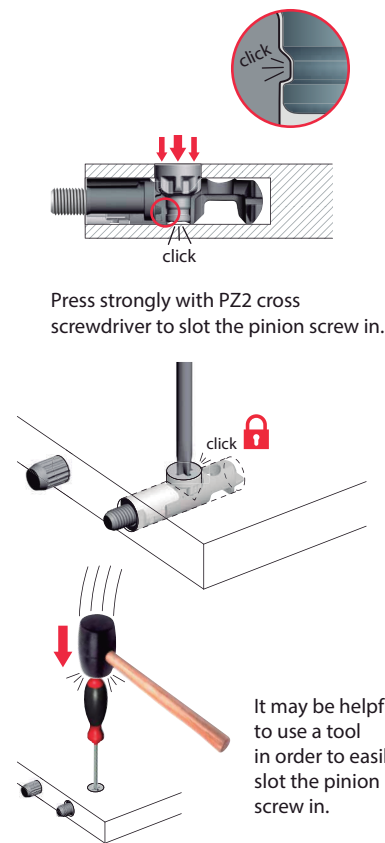
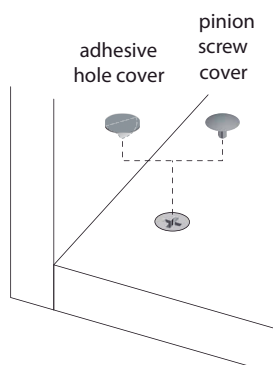
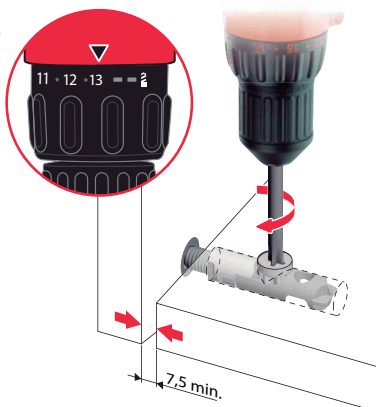


By turning the pinion screw, the threaded dowel makes a synchronized rotation.

ASSEMBLING

VERY IMPORTANT

Cordless driver drill to be used **ONLY** with **friction mode** on.



It may be helpful to use a tool in order to easily slot the pinion screw in.